

# Future Christchurch Update

*The voice of the Canterbury rebuild*

FEBRUARY 2015

Working together on parking solutions

Page 3

Christchurch: It's happening in 2015

Pages 4-5

Counting down to kapa haka

Page 7

Housing New Zealand tackling the rebuild head on

Page 13

The Boxing Day test at the new Hagley Oval heralded the return of international cricket to Christchurch.

## Cricket launches Christchurch onto the world stage

Christchurch is firmly under the spell of the ICC Cricket World Cup 2015. The eyes of the sporting world are on us.

This is the third-largest sporting event in the world, with a broadcast audience of two billion people.

It is our city's chance to shine with the New Zealand opening ceremony being held here and huge global interest in matches at the new Hagley Oval. Find out more about the tournament, including a guide to the Fanzone, on pages 4 and 5.

As well as the ICC Cricket World Cup 2015 and some exciting local events, Christchurch welcomes Te Matatini National Kapa Haka Festival and some of the world's top young footballers for the FIFA U-20 World Cup New Zealand 2015. It's all happening right here in 2015.

# Inside:

- 3 Future-proofing central city parking
- 4-5 Welcoming Cricket World Cup to Christchurch
- 6 Tram extension update
- 7 Kapa haka countdown
- 8 Strong demand for rebuild advice
- 9 Pools, libraries set for repairs
- 10 Christchurch City Council
- 11 Selwyn & Christchurch City Council
- 12 Environment Canterbury & EQC
- 13 Housing New Zealand & MBIE
- 14 SCIRT
- 15 Useful contacts



### Publishing details

This publication is jointly produced by CERA and CCC.

For editorial queries: editor@futurechristchurchupdate.co.nz

For delivery queries: delivery@futurechristchurchupdate.co.nz

ISSN 2422-8664

This work is licensed under the Creative Commons Attribution 3.0 New Zealand licence.

This publication is produced in a way that allows for maximum recovery and recycling of materials, significantly reducing energy use, air and water emissions.

## A new year, a new look

Welcome to your new monthly update on the rebuild in greater Christchurch, the *Future Christchurch Update: The voice of the Canterbury rebuild*.

CERA and Christchurch City Council have teamed up along with other greater Christchurch rebuild agencies to provide you with this fresh, easy-to-read publication. We will be talking to local people about what matters most to them, telling your stories, and keeping you up-to-date on projects and initiatives that affect you.

We hope you enjoy it. Send us your feedback to: [editor@futurechristchurchupdate.co.nz](mailto:editor@futurechristchurchupdate.co.nz)



### CHRISTCHURCH CITY COUNCIL

**Dr Karleen Edwards**  
Christchurch City Council Chief Executive Officer

I welcome the opportunity for the Christchurch City Council to be involved in this new publication.

We recognise that every one of you is hungry for information about what is happening in the city. This joint publication is one of many ways we intend to give you details about what the Council is doing, its projects, services, future events, current issues and options for dealing with them, and ways you can influence Council decisions.

People have told us in the past that they do not understand how the

Council makes decisions. We want to change that. I want our organisation to be open, transparent and, most importantly, helpful. Providing you with the information you need about our business is one way of doing this.

In this publication, you will find information about major events that the Council is involved with – the ICC Cricket World Cup and Te Matatani. You will also find details of how the city is commemorating the fourth anniversary of the 22 February earthquake. This will always be a poignant day for our residents.

We are also highlighting parking in this issue. The Council recognises that with the return of businesses and retailers to the central city, there is a need for more car parks. We are aware this issue is a priority and we are working closely with the Government on solutions.

Thank you for your support of our activities. ■



### CANTERBURY EARTHQUAKE RECOVERY AUTHORITY

**John Ombler**  
Acting CERA Chief Executive

As you will see in this update, 2015 is going to be a great year for events and rebuild progress in greater Christchurch. It will also be a time of change. As we near the end of the Canterbury Earthquake Recovery Act in April 2016, much is being done to ensure the vital rebuild work goes on. Recently, Minister for Canterbury Earthquake Recovery Gerry Brownlee announced the Advisory Board on Transition, which has a wealth of experience and knowledge about the recovery needs of greater Christchurch.

I would like to also take a moment to reflect on the coming fourth anniversary of the 22 February earthquake. History tells us it takes communities many years to recover from disasters and ongoing stress can be expected. The latest CERA Wellbeing Survey gives me heart in that it identifies "a significant lift in optimism and positive responses among residents". The overall quality of life for people in greater Christchurch continues to improve. For some, a part of this is tangible signs of progress and the availability

of new and repaired recreational facilities, and for some in the community there are still significant issues to resolve.

This rebuild still presents challenges, but one thing that can't be challenged is the commitment of the agencies involved to the rebuild of greater Christchurch. ■

### Rebuild progress at a glance ...



Source: Stronger Christchurch Infrastructure Rebuild Team (SCIRT), Statistics NZ.

## Central city parking crucial to recovery

The challenge to meet future demand for car parks is being met head on by Christchurch City Council and Christchurch Central Development Unit.

Tens of thousands more workers, residents and visitors than ever before will surge into central Christchurch in the coming decades. Right now, there are enough car parks to meet demand in the central city but we need more parks to meet future needs.

Christchurch City Council (Council) and Christchurch Central Development Unit (CCDU) recognise that parking is part of the formula for a thriving central city. There is a lot happening, but the long-term solution will take time.

At this time, there are enough car park spaces to meet demand. Existing car parking sites are being constantly monitored and we are working with property owners to identify opportunities for temporary car parks. Nearly 400 new car parks were on offer in the lead-up to Christmas.

- All on-street parking in the central city is being worked through to ensure parking options match current demand, like removing loading zones outside empty lots. The Council is also simplifying parking time restrictions.
- All parking time restrictions and meters around the East Frame were recently removed to leave this area as free parking.
- The Council and CCDU are committed to working with developers to provide parking options to support the rebuild and investment in the central city. A good example of this is the rebuild of The Crossing Car Park by The Carter Group, which plans a parking building with about 550 car parks in Lichfield Street opposite the new Bus Interchange.
- The Council formally resolved to demolish Lichfield Street Car Park. Negotiations are continuing with potential tenderers for its demolition and it is expected a contract will be awarded and demolition completed this year.
- The current Christchurch City Council Three Year Plan commits funding towards the rebuild of the Lichfield Street Car Park and replacement of the Manchester Street Car Park.
- The Council has launched a new parking page on its website. Get updates at: [www.ccc.govt.nz/parking](http://www.ccc.govt.nz/parking)



An example of a mixed use retail and parking space. Photo: Flickr/Omar Omar.



Currently, there are enough car park spaces to meet demand in the central city.

**Parking and travel choices – getting the balance right**

An Accessible City, the transport chapter of the Christchurch Central Recovery Plan, takes a fresh look at how people, cars and public transport can get to central Christchurch and move around more easily.

What choices will you make? Visit: [www.ccdugovt.nz/the-plan](http://www.ccdugovt.nz/the-plan)

## Meet the rebuild workers



**Tom Harding-Ilott (27)**  
Site Engineer for SCIRT's Downer team.

**Where are you from?**

I was born and raised here in Christchurch, NZ. I grew up and lived in the eastern suburbs.

**What made you want to be part of the rebuild?**

The opportunity to be able to help rebuild our city, to help those that have been struggling, and work on a variety of civil projects.

**What excites you about the future of greater Christchurch?**

Christchurch is set to be a world-class city, with the infrastructure to match. I think the precinct areas surrounded by the green 'frame' will be a great combination.

**What motivates/challenges you about the rebuild?**

To deliver projects ahead of schedule, on budget and to the highest of quality. I want to do my part and get our city back on track.



A sell-out crowd for day one of the Boxing Day test. The day marked the first international test match in Christchurch for eight years and the debut of Hagley Oval as an international cricket venue.

## Fanzone fun to bowl cricket fans over

The cricket carnival is underway in Christchurch and the dedicated, free Fanzone and Fantrail ensure there is a way to share in the fun even if you can't get to a game.

Situated at Victoria Square until 23 February, the Fanzone is the place to be for cricket fans of all ages. It is also the starting point for the ICC Cricket World Cup 2015 New Zealand Fantrail that leads to Hagley Oval where three matches will be played.

The Fanzone has food and beverage stands, backyard cricket games, prize giveaways, family days, face painting, cult movies and live big-screen coverage of all the games in Hagley Oval.

The Fantrail will open from 9am on the three match days and start from the Fanzone. The walk takes you from Victoria Square to Hagley Oval via the Botanic Gardens. Along the way there will be music, performances and entertainment.

The Fanzone is open between 9am (8am on match days) and 10.30pm daily until 23 February.

Christchurch Transport Operations Centre Manager Ryan Cooney is urging those attending the games and regular commuters to consider their travel plans when the Cricket World Cup games are on. Two games are being played at the weekend, while the weekday game starts at 11am, avoiding peak city traffic.

"There will be an increase in the number of road users and pedestrians and a number of restrictions around Hagley Oval which may impact on journey times, so we strongly encourage everyone to plan ahead and allow a bit of extra time," says Mr Cooney.

A number of restrictions will be in place around Hagley Oval, particularly around drop-off areas and no stopping areas. For more information, go to the Transport for Christchurch website: [tfc.govt.nz](http://tfc.govt.nz)



Stay ahead of the game and check [tfc.govt.nz](http://tfc.govt.nz) to plan your journey.

### Map Legend:

- Public car park
- Mobility parking
- Cycle stands
- Bus stops
- Taxi stands
- Fanzone/pedestrian access



## On the front foot in 2015

Three major events are happening in greater Christchurch this year. Hosting the ICC Cricket World Cup 2015, Te Matatini National Kapa Haka Festival and FIFA U-20 World Cup New Zealand 2015 marks a turning point for the city and the greater Christchurch community.

### Benefits

The three major events, along with others with a high profile like the SCIRT World Buskers Festival and the Foo Fighters concert, will bring tens of thousands of people to greater Christchurch. The All Blacks will also kick off their 2015 Rugby Championship campaign in Christchurch on 17 July. As well as boosting visitor numbers, such events will promote the re-emergence of greater Christchurch as an international destination.

### Legacy

In preparation for the FIFA U-20 World Cup NZ 2015 matches in June, Christchurch City Council – with a contribution from FIFA – has upgraded four local playing fields so that the teams will have world-class training facilities. After Christchurch has hosted nine of the FIFA U-20 NZ 2015 matches, these facilities will be one of the tournament's lasting legacies.

The Hagley Oval Pavilion, as the city's first completed anchor project, is already bringing international cricket back to Canterbury.

### The accommodation challenge

Chairman of the Tourism Industry Association Canterbury Hotels Sector, Bruce Garrett, says accommodation is always tight at this time of year but he is confident Christchurch can handle the pressure involved with the extra visitors.

Fewer than 50 per cent of the hotels that were available pre-quake have since re-opened; however, hotel bed numbers are recovering. In late January, the Ramada Suites re-opened with 40 rooms. The former Hotel So is due to re-open in April as a BreakFree, offering 263 rooms. Bruce Garrett says the former Scenic Suites Christchurch is coming online under a new name with 50 renovated rooms. The number of motels is actually higher than pre-quake levels and the number of motor camps is unchanged.

Around 30,000 people are expected to attend Te Matatini over the three-day festival, and approximately 5,000 of those will be from out of town. Organisers say they have



AMI Stadium in Addington (known as Christchurch Stadium during the tournament) will host nine FIFA U-20 World Cup NZ 2015 games in June.

booked out all the local marae and are using motels, hotels, sporting clubs and motor camps to house the visitors.

Meanwhile, trans-Tasman airline capacity has increased significantly for the 2014/15 summer season, with about 80,000 more seats than in previous years. More than 5.7 million passengers passed through Christchurch Airport in the past year.

### Handy websites

- Tournament and Fanzone: [christchurch2015.co.nz](http://christchurch2015.co.nz)
- Transport and parking: [tfc.govt.nz](http://tfc.govt.nz)
- Buses: [metroinfo.co.nz](http://metroinfo.co.nz)
- ICC Cricket World Cup 2015: [icc-cricket.com/cricket-world-cup](http://icc-cricket.com/cricket-world-cup)
- Te Matatini: [tematati.co.nz](http://tematati.co.nz)
- FIFA U-20 World Cup: [fifa.com/nz2015](http://fifa.com/nz2015)
- For more information: [futurechristchurch.co.nz](http://futurechristchurch.co.nz)

# Tram extension to open for ICC Cricket World Cup

Christchurch's trams are making their first trip along a new central city loop during the ICC Cricket World Cup, thanks to the combined efforts of CERA, Christchurch City Council and tourism operator Welcome Aboard.

The 1.4 kilometre tramway extension goes along Oxford Terrace, down City Mall (Re:START) and High Street, then back to Colombo Street and Cathedral Square. Much of it was already in place before the earthquakes and the Council has spent \$1.8 million on the installation of tracks, wires and poles to get it up and running.

In Oxford Terrace, the new tramway loop passes through the promenade section of Te Papa Ōtākaro/Avon River Precinct being developed by CERA's Christchurch Central Development Unit (CCDU). This section of the Terraces project has been delayed, in part because work on underground services was far more complex than originally thought. It is hoped work will be completed by May.

However, CCDU has worked hard with the Council to ensure the section of track through the construction site is open for tram trips from 12 February to 1 March. The opening date was chosen to coincide with the expected influx of visitors attending the ICC Cricket World Cup 2015. It will be the first time trams have travelled along that section of Oxford Terrace since the 1950s.

After 1 March, promenade construction will resume so that the world-class public space is completed as quickly as possible. CCDU, the Council, Welcome Aboard and contractor Fletcher Construction



Trams ran past the Bridge of Remembrance in the 1950s. Photo courtesy of Graham Stewart.

will try to ensure the Oxford Terrace section of tram track can re-open for short periods during construction, provided it is safe to do so.

Meanwhile, Welcome Aboard's usual tram services will continue on its original heritage track which takes in Cathedral Square, the Botanic Gardens, Canterbury Museum and New Regent Street. ■



## Earthquake Memorial final designs soon on show

You'll soon have the chance to see the six developed designs that have been shortlisted for the Canterbury Earthquake Memorial and to offer your feedback.

The people behind these designs have now progressed them from their initial ideas. Their final designs will be on display at the Christchurch Botanic Gardens this month. If you enter from Rolleston Avenue, you'll find them on the walkway alongside the Canterbury Museum. You'll also be able to find the final designs online at [ccdu.govt.nz/ideas-to-remember](http://ccdu.govt.nz/ideas-to-remember) during this time.

To give your thoughts on the final designs, fill in a feedback form at the Gardens display or online. Your feedback – along with feedback from bereaved families, those seriously injured in the earthquakes, recovery leaders and key stakeholders – will help the evaluation panel to come up with a recommendation on their preferred design to the Memorial Leadership Group.

For more on the Canterbury Earthquake Memorial, please visit: [ccdu.govt.nz/ideas-to-remember](http://ccdu.govt.nz/ideas-to-remember)



Christchurch Te Ahikaroa kapa haka performers on stage in Greece last August. Members of the group will perform at Te Matatini in March.

# Te Matatini: The Olympics of Māori culture

It is the Olympics of Māori cultural performance and will be seen in this region only once in a generation.

Te Matatini National Kapa Haka Festival will be held in North Hagley Park on 4–8 March 2015. The festival is expected to attract 30,000 people. There will be 45 top kapa haka teams, with up to 40 performers in each team, vying for top honours. Performers, supporters and dignitaries alone will number up to 7,000.

The biennial festival is produced by the Te Matatini national body and is this year being hosted locally by the Waitaha Cultural Council, with the support of Te Rūnanga o Ngāi Tahu and Christchurch City Council.

Waitaha Cultural Council (WCC) Project Manager Rangimarie Parata Takurua is living and breathing the festival. She knows what a rare treat it is for South Island Māori and the people of Canterbury.

"The last time this festival was here was 1986. We [WCC] bid three times without success so when we finally won the bid in 2012, we were ecstatic. This is the premiere event of Māoridom – it's like the Olympics of kapa haka."

Rangimarie Parata Takurua says everything is going into making the festival a success and something everyone can enjoy.

"Apart from the stage performances themselves, which will be spectacular in their own right, the whole event will be an experience."

The festival area will be 'dressed' with the works of local artists. There will be about 50 stalls offering food, and arts and crafts that reflect the flavours and culture of southern Māori. There will be whānau areas with free activities and entertainment for children. The Future Christchurch Visionarium will also be at the event for people to take a "virtual journey" through the rebuild of Christchurch.

Christchurch Mayor Lianne Dalziel says North Hagley Park will be a fantastic setting for the festival which "is going to be the best the country's ever seen".

**"This is the premiere event of Māoridom – it's like the Olympics of kapa haka."**

Rangimarie Parata Takurua

## A "Loving Heart"

The theme of the festival is "He Ngākau Aroha – A Loving Heart". It is an opportunity for the hosts to say "thank you" on behalf of Canterbury and reciprocate the generosity and support shown by iwi around the country after the Christchurch earthquakes.

Waitaha's bid for Te Matatini 2015 was mounted in 2011, in the immediate aftermath of the February earthquake.

"When we were bidding we saw the event as an opportunity to bring communities back together again after the earthquakes," says Rangimarie Parata Takurua. "It was a bright light in a fairly gloomy time. Over that time – that horrible year [2011] we had iwi sending food, blankets and people to help. Te Matatini groups held a big concert for us in Rotorua and raised \$100,000."

Te Rūnanga o Ngāi Tahu Kaiwhakahaere Tā Mark Solomon says hosting Te Matatini is a way Christchurch can say thank you and reciprocate the manaaki and whanaungatanga shown all around the country following the earthquakes.

"Ōtautahi: let's come together again and experience kapa haka and Māori culture at its finest," says Tā Mark. ■



Jasmin Ngawai, performer in Te Ahikōmau-a-Hamoterangi (a Christchurch kapa haka group)

**"It is quite exciting because in 1986 my mum stood for the first time here and I was about 8 or 9. It is once in a generation; Mum was here, now it's my turn and hopefully by the time it comes down here again my daughter could be part of it, or my boy."**

## FUTURE CHRISTCHURCH

*online and in the city*

[futurechristchurch.co.nz](http://futurechristchurch.co.nz) – everything you need to know about the exciting regeneration of the city. Check out inspirational videos, stories and facts about the city rebuild.

**Facebook** – be first to see the latest news on the central city rebuild and upcoming events.

**Showcase in Re:START mall** – a virtual city fly-through, videos about exciting city and community developments, photo booth and more. Entry is free.

*Immerse yourself in the exciting developments happening in our city.*

## Happy to be home

It's been a long journey for a Wainoni couple to get where they are today, comfortably settled in their new TC3 home. But they've only one word to sum up their life now – contentment.

Shirley Van Grinsven and Fred Killick were among the first in Christchurch to rebuild using RibRaft foundations specially developed by Firth for TC3 conditions.

The pair moved into their Wainoni home over a year ago and say they couldn't be happier. Their Avonside home was red-zoned after the earthquakes. In the years that followed they moved five times, which included a six-month stay with family.

"It was tough moving that many times, there's no doubt about it," says Shirley Van Grinsven, "but the memories of how difficult it was then are already starting to fade. We had a few giggles during the build but mostly we feel we were lucky with how well it went. We are just so content now in our new home. Contentment is the word I would use now to describe how we feel about life."

The property is a family affair. Shirley Van Grinsven's daughter gifted them the land to build on after levelling her rental property due to quake damage and the couple's grandson has built a townhouse on the rear part of the quarter-acre section. ■

*"We are just so content now in our new home. Contentment is the word I would use now to describe how we feel about life."*

Shirley Van Grinsven



Life's good: CERA profiled Shirley Van Grinsven and Fred Killick late in 2013 during the build of their TC3 home. More than a year on, they are enjoying their new home and have established a garden which is Shirley's joy and Fred's 'labour of love'.

## Strong interest in Residential Advisory Service

The service that helps home owners work through earthquake rebuild and repair issues is experiencing strong demand.

The Residential Advisory Service (RAS) is a free, impartial service that provides advice to property owners facing challenges in getting their homes repaired or rebuilt after the earthquakes. Home owners who qualify meet with an independent advisor who provides impartial legal advice.

Demand for RAS in its second year of operation appears to be increasing. During the last nine months there have been 973 referrals to independent advisors following an initial enquiry. In RAS's first full year of operation, 991 people were referred

for meetings with independent advisors. Since its launch in May 2013, more than 8,200 people have made contact with the service.

Chair of the RAS Governance Group Michelle Mitchell says it is concerning that so many property owners still need help resolving their earthquake rebuild/repair issues but it is encouraging that more people are seeing RAS as a place to go for support.

"We can't instantly solve people's problems but we can sit alongside them as they work through their

case. What we are able to do is say to people, 'This is how we see your situation, this is some advice on how you could proceed and we can help you through that process as much as possible.'"

Here is some feedback from people who've used the Residential Advisory Service:

"The independent advisor was excellent, very helpful and made everything clear."

"Found our meeting extremely valuable. Highly recommended."

"The independent advisor was great. They were able to contact people we thought we would not have access to." ■

To find out more about RAS, go to:  
[advisory.org.nz](http://advisory.org.nz)  
 ☎ 03 379 7027 or 0800 777 299



Edward Kristiansen-Benge, 3, having fun at the Scarborough Paddling Pool. Photo: Mette Kristiansen Photography.

## Council pools helping families splash into summer

One of the highlights of this summer for Sumner resident Mette Kristiansen and her family has been cooling off in the Scarborough Paddling Pool.

"It's just so exciting to have it opened because we have been looking forward to it opening for so long. It's just put the icing on the cake for the summer. My son and daughter have been having such a ball," Mette Kristiansen says.

Christchurch City Council opened the newly rebuilt paddling pool on Scarborough Esplanade on 20 December 2014 and families have been flocking there ever since. The new facility includes a splash pad, seating and water toys alongside the paddling pool.

Scarborough Paddling Pool is the first Council facility to be rebuilt since the earthquakes under its Community Facilities Rebuild Programme.

It is among a number of Council pools to be repaired and rebuilt that are opening this summer. The popular Waltham Pool re-opened on 17 January following extensive repair and strengthening work and the rebuilt Norman Kirk Pool is scheduled to open in February.

Waltham Pool has been strengthened to 67 per cent of New Building Standard and a number of upgrades have been made, including installing new signage, roofing, fencing and shade sails.

In Lyttelton, the Norman Kirk Memorial Pool has been rebuilt to 100 per cent of New Building Standard. New shade sails have been installed and the size of the children's and toddlers' pool increased.

*"To get these facilities up and running is a great way to see out the last months of summer and begin the new year."*

Darren Moses

Community Facilities Rebuild Unit Manager Darren Moses says the Council is focusing on repairing and rebuilding facilities that are currently closed.

"This is a real milestone for families who have been waiting to visit these pools since they closed after the February 2011 earthquake. To get these facilities up and running is a great way to see out the last months of summer and begin the new year. This year, we're looking forward to ramping up repairs, beginning construction and making plans for more new facilities," Mr Moses says.

### What else is happening?

- A number of community representatives have been appointed to a Joint Working Group that will have input into the development of a replacement Bishopdale Community Centre and Library. The Council is considering several options to replace the closed facility in Bishopdale Mall. Options include building a new facility, buying an existing building or leasing a building.
- Construction will begin on a new Aranui youth and community facility in Hampshire Street in mid 2015.
- The newly refurbished Hei Hei Community Centre in Wycola Avenue officially re-opened on Wednesday 28 January following repair and strengthening work.
- Repair and strengthening work will begin on Akaroa Museum next month. The museum is currently partially open. ■

Contact details:  
[www.ccc.govt.nz](http://www.ccc.govt.nz)  
 ☎ 03 941 8999  
 @ info@ccc.govt.nz

### Panel backs Nga Puna Wai sports hub

A hearings panel has recommended Christchurch City Council approve a proposal to develop a sports hub at Nga Puna Wai in southwest Christchurch.

The panel of five Councillors spoke with 26 submitters and considered the views contained in 4,725 separate responses on the proposal. Plans for the sports hub include an athletics track, hockey turfs, indoor and outdoor tennis courts and sports fields.

"About 90 per cent of respondents supported the development going ahead at Nga Puna Wai," says John Filsell, Recreation and Sports Unit Manager.

"This consultation process has given our panel the chance to really nail down the issues that the remaining 10 per cent identified before recommending to the full Council that they should proceed."

A final decision is expected to be made later this month. For more information, visit [www.ccc.govt.nz/NgaPunaWai](http://www.ccc.govt.nz/NgaPunaWai)



Members of the public are welcome to attend a service on 22 February at the Archery Lawn in the Christchurch Botanic Gardens commemorating the 2011 earthquake.

## Commemoration event for fourth anniversary of quake

A commemorative event will be held at the Christchurch Botanic Gardens Archery Lawn to mark the 22 February 2011 earthquake.

Activities start at noon on Sunday 22 February 2015, with a minute's silence at the time the earthquake happened – 12.51pm.

Family members of those who died in the quakes, seriously injured survivors, members of the emergency services and the wider community will together share in the memories of that day. Members of the public are welcome to attend.

Christchurch Mayor Lianne Dalziel says this is a time for quiet reflection and remembrance.

"While time has passed, we still feel the pain of loss and hold fast to the special memories we have of loved ones who died in the earthquakes," Lianne Dalziel says.

"We stand side by side with those who survived but had their lives dramatically changed in many different ways on 22 February."

Details are available on Christchurch City Council website: [www.ccc.govt.nz/22feb](http://www.ccc.govt.nz/22feb)

## Can you capture a city in transition?

Christchurch City Council wants to involve the public in all aspects of its Long Term Plan, with its latest initiative a photography competition to find a striking cover shot for the consultation document.

The Council is currently working on developing a draft of its Long Term Plan which will shape the city over the next 10 years and beyond. Public consultation on this draft Plan will occur in March–April before the Council formally adopts the Plan at the end of June. For more information on the Long Term Plan, visit: [www.yourvoice.ccc.govt.nz](http://www.yourvoice.ccc.govt.nz)

To start discussions with residents on the Long Term Plan, late last year Councillors and Community Board members took time to drop in at weekend markets, fairs and galas, malls and supermarkets, the University of Canterbury, Jellie Park and the spectacular Diwali festival to chat with people about the financial choices ahead.

They explained the issues facing the city and some of the options the Council can consider, and heard what residents' priorities are for the recovery and their thoughts about the choices ahead. The public feedback is helping shape the consultation document.

For the front cover the Council is looking for a photograph that

captures the mood of a city in transition – and the Council thinks its residents are best placed to provide this.

Anyone can enter up to five images in the photography competition which closes on 22 February. For further information on entries, go to: [www.ccc.govt.nz/photocompetition](http://www.ccc.govt.nz/photocompetition)

## Little minds think big in Halswell

The youngsters at ABC Halswell Preschool have brainstormed a name for the new Halswell library, pool and community facility being built in their neighbourhood.

It was part of a recent Christchurch City Council competition to find a catchy name for the new multi-purpose facility. Splash 'n Read and Halswell Heaven were two names that got the youngsters' thumbs up.

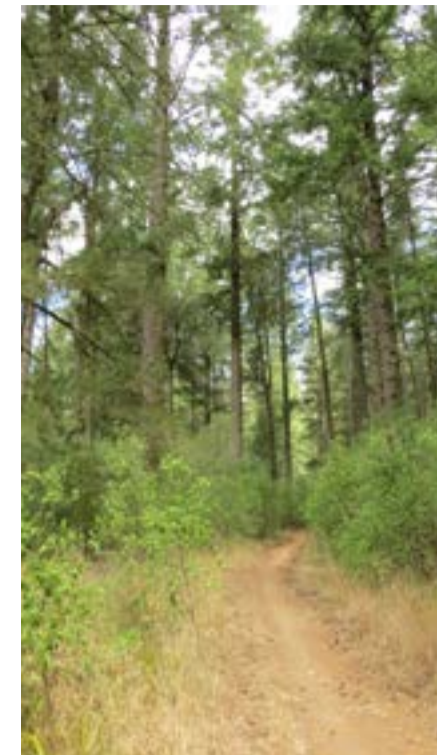
The competition received more than 150 suggestions and the results of a public vote on the finalists will go to the local Riccarton-Wigram Community Board for a final decision, with a winner being announced in March.

Naming a new community facility is one of many opportunities for Christchurch to be involved in City Council decision making in 2015. Christchurch is a member of the 100 Resilient Cities Network and soon communities and organisations will be encouraged to share what's important for them in building resilience and to identify potential projects.

Check out [www.ccc.govt.nz/HaveYourSay](http://www.ccc.govt.nz/HaveYourSay) to find out how you can influence Council decisions. ■



The future users of the Halswell library, pool and community facility share ideas.



Mountain bikers and other recreational users will have a new forest park to enjoy.

## New forest park to be created

McHughs Forest Park, near Darfield, is to be developed as a forest park which can be used for walking and mountain biking, picnicking and education while continuing to operate as a production forest.

Selwyn District Council recently adopted a new plan to guide the future development of the park. The 43-hectare forest is located off State Highway 73 just outside Darfield. It is mostly Douglas fir, along with a mix of other species such as *Pinus radiata*, and is considered to be one of the most important Douglas fir forests in New Zealand.

It is currently a popular walking spot for local residents, and offers some welcome shade on hot summer days.

Consultation was undertaken last year with the public on how the park should be developed in the future. The first actions to be completed this year include installing boundary fencing, developing a parking area and loop track and upgrading the existing track. The installation of educational signage, development of a pump track and picnic tables are other actions planned to be completed by 2017. ■

Contact details:

[selwyn.govt.nz](http://selwyn.govt.nz)

03 347 2800 or 03 318 8338



Crowds flocked to New Brighton beach for the recent Streets Kite Day.

## Around the city

### Rebuild momentum steady

Rebuild momentum will remain steady for most of this year, with a slight easing in building consent numbers during the year, Christchurch City Council forecasts show. The Council is confident it can cope with the workload with the changes it has made that led to it being granted accreditation as a Building Consent Authority by International Accreditation New Zealand in December 2014. The Council estimates it will process 7,143 consents this year. This is compared with 10,229 consents granted in 2014 (forecast 8,140) with a combined building value of \$3.07 billion.

### Repairs to Moorhouse Avenue overbridge

Repairs are underway on the Moorhouse Avenue overbridge and will take around 20 months, SCIRT says. While demolishing the bridge was considered, repairing the existing bridge is a more cost-effective solution. The Moorhouse Avenue overbridge will remain open for the duration of the project. SCIRT is working with nearby businesses to coordinate lane closures. At times there will be changes to traffic management including lane reductions, lane closures and detours. Electronic signage will notify road users of any upcoming changes. Businesses on Moorhouse Avenue will be open as normal. More information about the project is available at: [www.strongerchristchurch.govt.nz](http://www.strongerchristchurch.govt.nz)

### Outdoor fire ban across city

A city-wide ban on lighting outdoor fires remains in place across Christchurch and Banks Peninsula. The ban applies to lighting fires and using charcoal barbecues and other devices that run on solid fuel. People can use gas barbecues as long as they are careful and have access to a reliable water supply. Anyone caught lighting a fire or allowing a fire to continue to burn on their property can be fined up to \$20,000 or be liable for firefighting costs depending on whether they live in an urban or rural fire area. People can be liable for costs associated with neighbouring properties. For more information, go to: [www.ccc.govt.nz/firebans](http://www.ccc.govt.nz/firebans)

### Water restrictions in place

Akaroa residents and visitors are reminded to conserve water as supply levels remain low. Water restrictions limit people to hand-held hosing of their gardens but further restrictions could apply if conditions worsen. Christchurch City Council asks that people make sure all taps are turned off tightly and do not drip, turn off the tap while brushing teeth, take a short shower instead of a bath and flush the toilet only when you need to. For more information, contact the Council on 0800 800 169. ■

Contact details:

[www.ccc.govt.nz](http://www.ccc.govt.nz)

03 941 8999

[info@ccc.govt.nz](mailto:info@ccc.govt.nz)

## Natural Environment Recovery Programme Whakaara Taiao

# You are invited to a series of sessions to update you on the Natural Environment Recovery Programme

Wednesdays 12.30pm - 1.30pm  
Function Room, Christchurch City Council, 1st floor

18 February	Recovery of recreation on the Port Hills and Banks Peninsula
25 February	How earthquake waste has been managed, and will be managed in future events
4 March	Recovery of the Heathcote River/Ōpawaho
11 March	Earthquake changes to the coast and estuary intensified by sea-level rise
18 March	What is happening in the residential red zone?



Come to as many of these as you like.  
Free entry, no need to register.  
Tea, coffee and water will be available from 12.10pm so come early and network. Bring your lunch.  
Each session will have about 30-40 minutes of presentations and then time for questions and discussion.  
For further information contact:  
Chrissie Williams, Programme Leader,  
Natural Environment Recovery Programme;  
chrissie.williams@ecan.govt.nz, 027 702 7457  
[www.ecan.govt.nz/nerp](http://www.ecan.govt.nz/nerp)



## What's happening with EQC in Canterbury in 2015?

By April this year, the Earthquake Commission's aim is for every customer in the Canterbury Home Repair Programme (CHRP) to either have had their home repaired or know how and when their claim will be settled.

To date, CHRP has repaired more than 93 per cent of homes in the programme, and around 900 are underway. According to the latest figures from Fletcher EQR, CHRP has completed 64,507 out of a total of 68,537 claims with EQR (as at January 2015).

EQC aims to give every customer certainty. To that end, EQC is working with home owners who have challenging personal circumstances to discuss their options and how to help them progress their claim as soon as possible.

gives people an assessment of the earthquake damage to their home, the best repair strategies and the average cost of these."

CHRP repairs, which is one of the final steps for completing building repairs in Canterbury. Excess has already been deducted from payments to customers whose claims were cash settled. ■

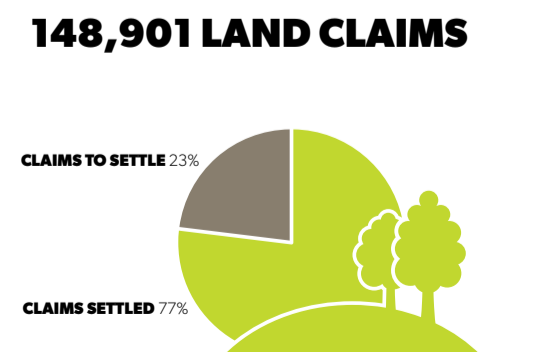
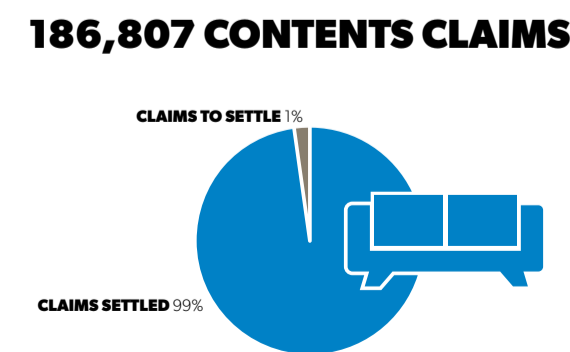
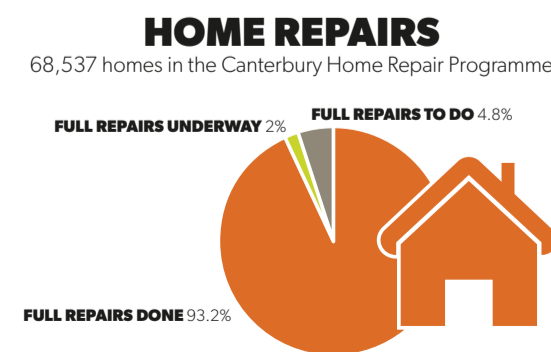
### Help is available

"Home owners who have not had a scope since this time last year can have a no-obligation detailed scope to give them more information on which to base a decision, without committing themselves to a managed repair," Reid Stiven says. "A scope

### What happens after April?

As generally applies with insurance, EQC requires an excess payment. From April, EQC will begin posting invoices for excess on completed

Contact details:  
 🏠 [eqc.govt.nz](http://eqc.govt.nz)  
 ☎️ 0800 DAMAGE or 0800 326 243



Data as at January 2015.

## Busy 2015 for Housing New Zealand in Christchurch

Hundreds of new state houses will be built across Christchurch in 2015 as Housing New Zealand's earthquake recovery programme hits full gear.

Already, more than 130 new homes have been built and, by the year's end, up to 700 new homes will have been built.

One example is a 10-unit complex in the heart of Addington.

Prime Minister John Key recently visited new tenant Paul Meek who said he loved his new home.

This work is a great opportunity to rejuvenate Housing New Zealand's Christchurch housing stocks, Canterbury Earthquake Recovery Programme General Manager Paul Commons says.

"The earthquakes, though tragic, have created an opportunity for us to help redefine state housing in Christchurch with new, warm, dry, modern, built-for-purpose social housing."

Mr Commons says 2015 will be the busiest ever year for Housing New Zealand in Christchurch.

Up to 1,000 workers will be on the ground building new state housing.

The other key work that will keep Housing New Zealand busy in 2015 is its repairs programme.

More than 3,000 earthquake-damaged Housing New Zealand properties have been repaired so far and by the end of this year, up to 5,000 state houses will have had repairs completed. ■

*"The earthquakes, though tragic, have created an opportunity for us to help redefine state housing in Christchurch with new, warm, dry, modern, built-for-purpose social housing."*

Paul Commons

Contact details:  
 🏠 [hnzc.co.nz](http://hnzc.co.nz)  
 ☎️ 0800 801 601  
 @ [enquiries1@hnzc.co.nz](mailto:enquiries1@hnzc.co.nz)



Prime Minister John Key chats with Housing New Zealand tenant Paul Meek inside his new house in Addington.

## A better relationship between you and your contractor

If you're building or renovating, you should know about the new consumer protection measures that came into effect on 1 January this year.

Consumer protection measures under the Building Act apply to new residential building work where the home owner has contracted directly with the building contractor.

their skills, qualifications, licensing status and the insurance or guarantees they provide before the home owner signs a contract

- an automatic 12-month defect repair period starts when the work has been completed. The contracting party must arrange to fix any defects they've been told about

The measures include:

- you must have a written contract for residential building work costing \$30,000 or more (including GST)
- if the work costs \$30,000 or more (including GST), or if the home owner requests it, the contractor must provide a disclosure statement with information about

- the contractor must provide a standard checklist to potential clients if they request it or if the building work is likely to cost \$30,000 or more (before the potential clients sign the contract)

- there are new ways to take action when warranties in the Building Act have not been met

- the contractor must provide information about any ongoing maintenance requirements, insurance policies and guarantees or warranties once the building work has been completed

- contractors can be fined if they don't comply with the law. ■

Contact details:  
 🏠 [mbie.govt.nz](http://mbie.govt.nz)  
 ☎️ 04 901 1499  
 @ [info@mbie.govt.nz](mailto:info@mbie.govt.nz)

# The year ahead for Stronger Christchurch Infrastructure Rebuild Team (SCIRT)

## What's in store on our roads in 2015?

It's set to be another busy year for SCIRT. Now well over half way through its rebuild work programme, SCIRT is on track to complete construction work by December 2016. Here's what to expect during 2015.

## The central city

A lot of SCIRT's work in the central city (between Bealey, Fitzgerald, Moorhouse and Deans avenues) was done last year. SCIRT is now well over 80 per cent of the way through the central city work programme, and expects to finish the remaining work by the middle of this year.

## The suburbs

While there'll be less work in the central city this year, people can expect to see more work happening in the suburbs and on main arterial roads. Work will be more widespread across the city.

At the start of the programme SCIRT's priority was to repair the infrastructure most badly damaged by the earthquakes. Many of these repairs were complex and meant long-term road closures and detours. As SCIRT moves to areas with less damage, repairs are becoming simpler and typically require less time. This means work crews are likely to shift around Christchurch a bit more, and road closures and detours are likely to be in place for shorter periods of time. It may feel like there's lots of coming and going.

Most of SCIRT's work has been in the central city and in the east of Christchurch up until now, but this year people are likely to start noticing more repair work happening in the west and around the Port Hills.

## Late 2015 to 2016

SCIRT's work is expected to continue at current levels to the middle of 2016. There will be an increased focus on sealing road surfaces during that time, and particularly next summer.



Kiri Ward, a Senior Site Traffic Management Supervisor from SCIRT's Downer team, hard at work.

## Busy spots – Avonside, Wainoni, Bromley, New Brighton area



SCIRT has several construction teams working closely in the Avonside, Wainoni and New Brighton area on interconnected piping and pump station projects.

- Fletcher is working on Rowses Road and will later move onto Breezes Road near Cuthberts Road. Watch for changing traffic management.
- Downer is working on Maces Road between Wickham Street and Ruru Road, and on Wickham Street, between Maces Road and Francella Street.
- City Care is working on Pages Road. A one-way system, heading towards the city, is in place. The detour route for those travelling towards New Brighton is Buckleys Road, Kerrs Road and Wainoni Road to Anzac Drive.
- McConnell Dowell is working in the Kerrs Road and Wildwood Street area.

## Mt Pleasant/ Sumner area

This year, there is lots of work happening on Mt Pleasant and around Main Road to Sumner. Projects include:

- Main Road three laning
- Retaining wall repairs on Mt Pleasant Road
- Wastewater, storm water and roading repairs on McCormacks Bay Road and in the Redcliffs area
- Fresh water supply work in Clifton

- Wastewater repairs in Sumner/ Scarborough.

For more information about each project visit: [strongerchristchurch.govt.nz](http://strongerchristchurch.govt.nz) and look under the News Archive for 'The road to Sumner'.

Contact details:  
[strongerchristchurch.govt.nz](http://strongerchristchurch.govt.nz)  
 03 941 8999  
[info@scirt.co.nz](mailto:info@scirt.co.nz)

## Go the extra mile – support local shops and businesses

SCIRT often needs to carry out repairs in the street next to, or in front of businesses. This can mean more noise and dust, and less customer parking and access. It can be tough on these businesses!

For shops and businesses: Plan ahead. Tell your customers about the work and ask for their continued support throughout the work. If you're unsure about

anything, please contact SCIRT to discuss the impacts. SCIRT staff will work with you to minimise these as much as they can, while getting the work done safely.

For customers: Please go the extra mile to visit businesses affected by rebuild road works. Everyone in Christchurch has a role to play in supporting businesses and their staff during the rebuild. ■

# Summer OF Fun

IT'S HAPPENING!

If you haven't made it to a free Summer of Fun community event, there is still time. Events to bring communities together throughout greater Christchurch run through until the end of March.

Young people recently attended the low-key Bangers and Music event in Sumner. Organiser Lukas Thielmann says they wanted to use music to bring local youth together.

"With the loss of city centre, especially in the music community, there is a loss of a central hub. It is slowly coming back but it has still got a long way to go. The music community is a little bit fragmented now, which is one of the reasons why we chose a music theme," says Lukas Thielmann.

A Summer of Fun community fun day at Central New Brighton School on 25 January gave parents, students and teachers from the new Rawhiti School a chance to meet ahead of the new school year. The school has been created from the merger of Central New Brighton, Freeville and North New Brighton schools.

Events are free, community-led and made possible by the Christchurch Earthquake Appeal Trust. Close to 70 events are being run this summer.

### Events coming up include:

EVENT & LOCATION	DATE	TIME
Aranui Summer of Fun Day - St Ambrose Anglican	Sat 21 February	10.30am - 2.30pm
Summer of Fun Day - Victoria Park, Rangiora	Sun 22 February	11am - 2pm
Cust Village Picnic and Planting	Sun 22 February	10am - 2pm
Community Fun Day - Holliss Reserve, Cashmere	Sat 28 February	1.30pm - 4.30pm



Music and creativity at the recent Ukelele and Recorder Fun Day at Knox Church.



Bumper ball fun: Parents and pupils from the new Rawhiti School gathered together for a day of fun.

To find out what is happening in your neighbourhood, go to: [bethere.co.nz](http://bethere.co.nz) or [facebook.com/choicechch](https://facebook.com/choicechch)

## Useful contacts



Christchurch City Council  
 03 941 8999  
 0800 800 169  
[info@ccc.govt.nz](mailto:info@ccc.govt.nz)  
[www.ccc.govt.nz](http://www.ccc.govt.nz)

CERA  
 0800 RING CERA  
 0800 7464 2372  
[info@cera.govt.nz](mailto:info@cera.govt.nz)  
[cera.govt.nz](http://cera.govt.nz)

EQC  
 0800 DAMAGE  
 0800 326 243  
[eqc.govt.nz](http://eqc.govt.nz)

SCIRT  
 03 941 8999  
[info@scirt.co.nz](mailto:info@scirt.co.nz)  
[strongerchristchurch.govt.nz](http://strongerchristchurch.govt.nz)

Waimakariri District Council  
 03 311 8900  
[waimakariri.govt.nz](http://waimakariri.govt.nz)

Selwyn District Council  
 03 347 2800  
 03 318 8338  
[selwyn.govt.nz](http://selwyn.govt.nz)

Environment Canterbury  
 03 353 9007  
[ecan.govt.nz](http://ecan.govt.nz)

Canterbury Support Line  
 0800 777 846

Earthquake Support Coordination Service  
 0800 777 846

Residential Advisory Service  
 03 379 7027  
 0800 777 299  
[advisory.org.nz](http://advisory.org.nz)

Canterbury Earthquake Temporary Accommodation Service  
 0800 673 227  
[quakeaccommodation.govt.nz](http://quakeaccommodation.govt.nz)



# What's on...

## Culture Galore

Saturday 7 March, 12noon–4pm  
Ray Blank Park, FREE

Experience the world and celebrate cultural diversity. Be entertained by more than 50 cultural performances and demonstrations, sample appetising ethnic cuisine or get involved in some arts and crafts.



Free

**Anthony Harper Summer Theatre presents Peter Pan**  
4–22 February, Riccarton Bush

Fly away with us this summer to Neverland. The Forge at The Court in collaboration with The Court Youth Company presents a new adaptation of Peter Pan for the whole family.



Free

## Streets Children's Day

Sunday 1 March, 10am–3pm  
Airforce Museum of New Zealand

Face painting, crafts, bouncy castle and pony rides are all part of the fun of Te Rā O Te Tamariki – Children's Day.



## ISPS Handa Women's Open

27 February–1 March, 7.30am until finish  
Clearwater Golf Club

Returning past champions and up-and-coming stars take on the best New Zealand has to offer for the coveted Open Trophy.



## Foo Fighters Sonic Highways Tour

Wednesday 18 February, gates open 4.30pm  
AMI Stadium Christchurch

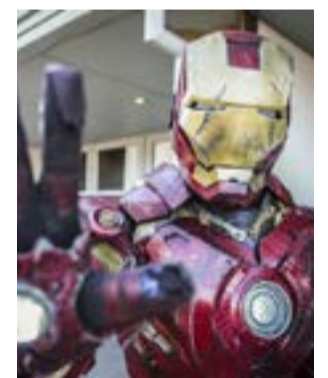
Tickets: \$93.80 – \$199.45



Free

## Canterbury Japan Day 2015

Sunday 1 March  
10am–5pm  
Riccarton Park  
Function Centre



## Armageddon Expo Christchurch

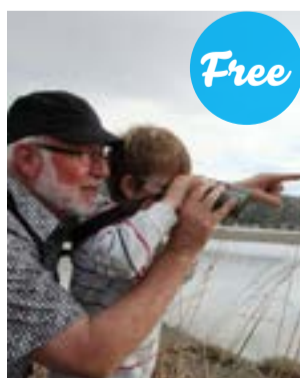
Saturday 7 March and  
Sunday 8 March  
10am–5pm  
Horncastle Arena



Free

## Ingham Lazy Sundays

15 and 22 February  
3pm–4.30pm  
Botanic Gardens



Free

## Farewell to the Godwits

Thursday 19 February  
5pm–6.30pm  
Southshore Spit



Free

## SPECTRUM Street Art Festival

14 February–10 May, YMCA

Featuring the largest Banksy collection in the southern hemisphere.



## Mitre 10 Run to Remember

Sunday 22 February  
9am  
Victoria Park

\$12–\$17

The events featured on this page are just a selection of what's happening in Christchurch over the next few weeks. Find out more online. ■

**Be There** >>>  
CHRISTCHURCH EVENTS

For more events visit:  
[bethere.co.nz](http://bethere.co.nz)