



Greater Christchurch RECOVERY UPDATE

Christchurch Central Recovery Plan

The Canterbury earthquakes have provided an unprecedented opportunity to rethink, revitalise and renew central Christchurch. It can be built back better than it was before – increasing its social and cultural value to greater Christchurch, Canterbury and the rest of New Zealand. It is a great opportunity albeit one born from adversity.

The bold and visionary Christchurch Central Recovery Plan (CCRP) for rebuilding central Christchurch has now been revealed.

The CCRP incorporates a spatial Blueprint Plan developed by a professional consortium working with the Canterbury Earthquake Recovery Authority's Christchurch Central Development Unit (CCDU) over a 100 day period.

The first step in revitalising central Christchurch will be to redefine the central city commercial area. A smaller central area or 'Core' will be shaped by land that wraps the north, east and south of the central city, known as 'the Frame'. The new Core meets the community desire for a compact city.

CCDU Director Warwick Isaacs says the Frame will provide a focused commercial and retail area, vital for economic prosperity.

Papa o Ōtākaro/Avon River Precinct is among a number of precincts represented in the CCRP and is a priority. Capitalising on the river's natural assets, the precinct will attract pedestrians and cyclists and strongly reflect the city's Ngāi Tahu heritage.

Other anchor projects include a convention centre that overlooks the Square and Victoria Square, a Metro Sports Facility and a new Central Library. Retail, Health and Justice and Emergency Services precincts will also be developed.

Christchurch & Canterbury Tourism Chief Executive Tim Hunter says the planned new convention centre will bring millions of dollars into the city and give the tourism industry confidence to move forward.

"This is the news we have been waiting for and we're thrilled there is now some certainty around the planned new convention centre," says Mr Hunter.

It's hoped all the anchor projects will be completed by the end of 2017 with CERA (including CCDU), Christchurch City Council, Ngāi Tahu and other stakeholders taking the lead in terms of implementation. There will be substantial government investment in the rebuild of Christchurch but it's also vital that the Christchurch Central Recovery Plan attracts external investment. To that end, CERA has set up a new service called Invest Christchurch.

Canterbury Earthquake Recovery Minister Gerry Brownlee says the Invest Christchurch unit's initial focus will be the local and national investor, business and development communities. Interest from the international community is welcome and an international investment marketing campaign is set to be launched in the fourth quarter of this year.

"Invest Christchurch will be professionally staffed by a team of investment facilitators. It will provide in-depth understanding of the Christchurch Central Recovery Plan itself and work with potential investors to identify opportunities in Christchurch that might support their investment mandates and strategies."

(Interested parties can contact Invest Christchurch on +64 3 352 0636 or email investchristchurch@cdu.govt.nz)

CCDU Director Warwick Isaacs says Christchurch needs a thriving central city and he's confident the Christchurch Central Recovery Plan will attract investors from Christchurch and beyond. The business community agrees.

Canterbury Employers Chamber of Commerce Chief Executive Peter Townsend is delighted with the Recovery Plan. "The first thing about this plan is it's going to take the city somewhere new. We're not going back to where we came from. This plan is so radical it has the potential to re-energise the whole of the city and I'm really excited about that."

It's also excited Central City Business Association Manager Paul Lonsdale who says the Plan is brave and will stimulate growth and attract investment.

Business New Zealand says the Blueprint Plan for the centre of Christchurch is exciting not just for Christchurch, but for all New Zealand.

Chief Executive Phil O'Reilly says the new urban centre will be significant for business and it will be important to ensure that business is fully involved in its development.

Christchurch Mayor Bob Parker says it is through investment and community that the city will prosper. "You need investment to create jobs, you need jobs to attract people and you need people to give a city a bright future. 🌟"

CERA
Canterbury Earthquake
Recovery Authority

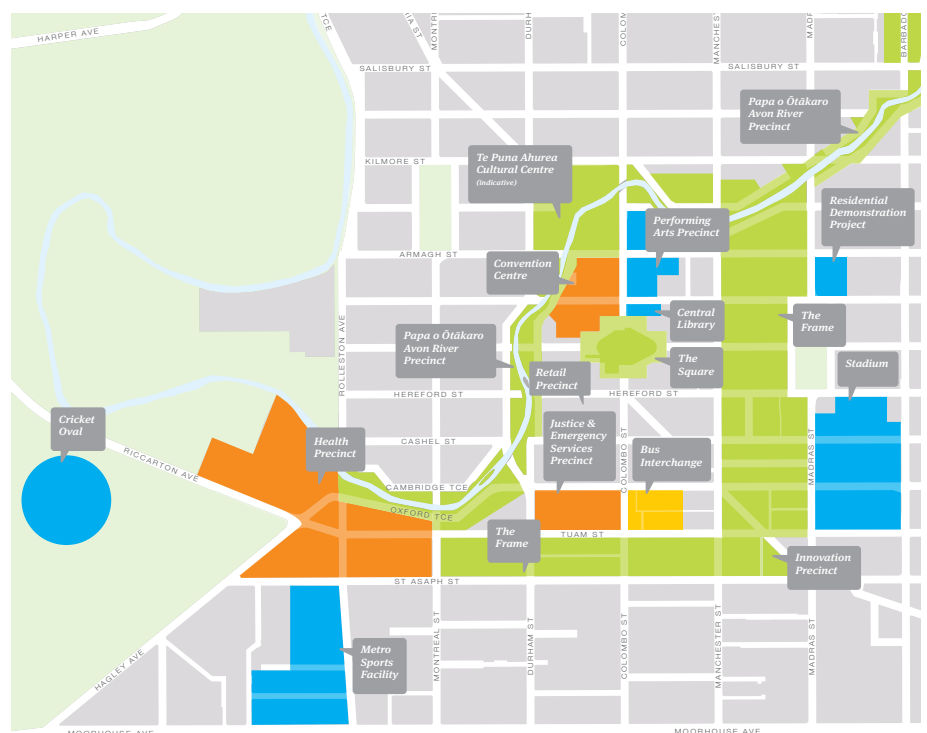
ISSUE 12 August 2012

INSIDE

Christchurch Central Recovery Plan, focus on Health and Justice and Emergency Services Precincts
page 2 and 3

Find out details of CERA's community engagement programme for green zone homeowners
page 4

Community resilience
page 7



CER101 0812A



Gerry Brownlee
Canterbury Earthquake Recovery Minister

By the time you read this, I hope you will have read about the Christchurch Central Recovery Plan.

I think in many respects this plan represents an end to Christchurch's worst days and a beginning of the best. It is a very exciting step in our recovery.

We have a blueprint for the rebuild of our central city and its restoration to its place as the heart of our city.

I know for some of you still facing challenges with repairing your homes, with your insurers or with finding a new home, it may seem that the plan is almost irrelevant to you, and that the projects it defines are not a priority at this time.

The importance of these projects to our economic and social well-being cannot be overestimated however. They will directly and indirectly positively impact on all of us and are vital to the recovery of a thriving, growing, healthy city.

It will facilitate business and industry growth, retail infrastructure, the growth of the arts and creative industries, employment, sports opportunities, and social infrastructure.

I encourage you to read the detail in Recovery Plan: our future, today, which details the anchor projects, the prioritising of those projects, and the positive impact, economic and otherwise, they will have for us all.

I'd like to thank the City Council for the work which went

into the development of the Annual Plan, work which was hugely valuable in the development of the blueprint.

I'd like also to thank those of you who contributed to that Annual Plan. Your input was vital to its development and in turn to the development of the Recovery Plan.

Finally, I'd like to thank Roger Sutton at CERA and Warwick Isaac and his team in the Christchurch Central Development Unit. We presented them with a huge challenge, 100 days to develop a blueprint for our Central City. We brought in some of the very best planning and design expertise available to assist to determine what investment was required, in terms of projects and their location. It is impossible to explain how much work has gone into this project.

I am very proud of the Plan they have produced, with your input. It is truly OUR plan, a truly impressive, world-leading piece of work we can all be proud of.

There is so much work to do to bring the vision to fruition but we have a great foundation upon which to begin.

While the launch of the blueprint has much of our focus at this time, I assure you that other necessary earthquake recovery work continues.

We continue to work with the insurance industry to provide greater clarity around issues such as TC3, and apportionment.

CERA is publishing an updated information booklet addressing the most commonly asked questions about TC3 repair or rebuild, and will commence a series of

community meetings late-August, which will provide a chance for those of you on TC3-designated land to work through the TC3 issues.

EQC recently announced its TC3 drilling programme has completed work in North New Brighton, with Aranui, Waimairi Beach, Parklands and Queenspark all in progress.

I'm delighted that in this regard, all insurers are working collaboratively with EQC.

The panel I appointed to review requests from property owners to rezone their land is due to report back to me and I will consider its advice and make an announcement later this month.

CERA also continues to work on the zoning of the remaining 166 properties in the Port Hills which are still zoned white.

With the work completed and underway and the decisions we have made, I know many of you are slowly but surely making the decisions which enable you to move forward you're your lives. Know that we continue to work hard to assist you.

I wish you all well. 🌟

CHRISTCHURCH CENTRAL RECOVERY PLAN, ANCHOR PROJECT

Justice and Emergency Services Precinct

A Justice and Emergency Services Precinct will be established in the block defined by Lichfield, Colombo, Tuam and Durham Streets, just inside the Frame.

Using a model that's never been seen in New Zealand before, the Precinct will incorporate the justice and emergency service sectors, along with Civil Defence and Emergency Management. It will bring a substantial workforce into the central city, stimulating the recovery by supporting retail and commercial activity. It will accommodate commercial and service functions with up to 840 justice sector staff and 370 emergency services staff. The built structure is expected to cover a total floor area of about 31,000 square metres.

The justice sector will achieve operational efficiencies through an improved service delivery model in which the Ministry of Justice, New Zealand Police, Department of Corrections and the Judiciary are co-located. The different departments will be able to share infrastructure and integrate service delivery.

The Precinct will also allow a collaborative approach between other emergency service providers – for example, a joint communications centre will support the various functions of Police, the New Zealand Fire Service, St John and Civil Defence.

The location will provide easy access to public transport and arterial roads for emergency service movement.

Prime Minister John Key has identified the Justice and Emergency Services Precinct as a priority.



Context Axonometric

"For those anchor projects where the government has the primary responsibility such as the hospital redevelopment, Justice and Emergency Services Precinct and educational facilities, we will get on and get them done for the good of the city."

New Zealand Police Canterbury District Commander Superintendent Gary Knowles says his enthusiasm for the Precinct must be contagious.

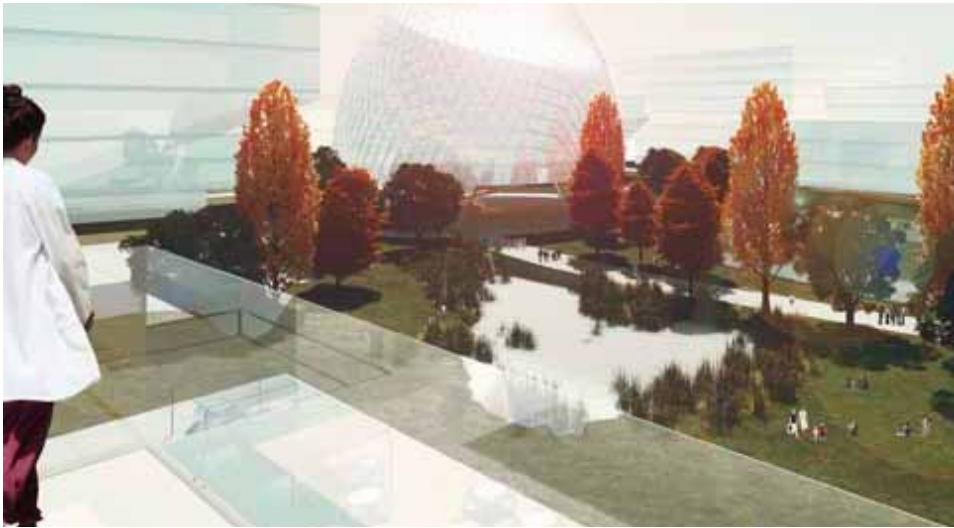
"Officers are telling me hallelujah! This makes a huge amount of sense. The new location gives us awesome certainty – and it is amazing that out of the tragedy of Christchurch we now have the opportunity to work with one of the best models that can be provided."

Assistant Commissioner Dave Cliff says the Police and Fire Communications Centres for the South Island have been co-

located for some years and having Ambulance join them will mean even greater opportunities to improve the response to emergency calls.

"What we have witnessed during the response to the Christchurch earthquakes was the importance of partnerships. Having Police, Fire, Ambulance and Civil Defence co-located and operating from a state-of-the-art Emergency Operations Centre will mean even greater opportunities for a seamless response to any situation that Canterbury, or indeed the South Island, may face in the future."

Assistant Commissioner Cliff says, similarly, Police, court and probation services already work closely as part of the justice sector and having a more integrated approach can only help to improve services to victims and the public. 🌟



Landscaped Health Precinct

CHRISTCHURCH CENTRAL RECOVERY PLAN, ANCHOR PROJECT

Health Precinct and Metro Sports Facility

The Health Precinct will be anchored by the redevelopment of Christchurch Hospital, providing the stimulus to establish a world-class hub for health education, research and innovation. It will be situated in and around the South Frame and builds on existing health-related organisations in the area.

The Precinct will be well connected to the Justice and Emergency Services Precinct, the Metro Sports Facility and the central city Core.

The Health Precinct could include:

- Allied health – partnerships between industry and clinicians
- Medi-hotels – where patients and families can stay while receiving outpatient or specialist care
- A knowledge campus – providing clinical education and training
- A research campus – public and private research activities
- Private and public services delivering health care in and near the new ambulatory care hub

Canterbury District Health Board Chief Executive David Meates is welcoming the new Christchurch Central Recovery Plan.

"I fully support the Health Precinct and love the idea of clustering similar health and businesses together. We are also looking forward to growing innovation in the health system and know that there is a wealth of talent scattered around the city, which will benefit from being co-located. This will also support the recruitment and retention of talented clinicians and health workers who will be part of a precinct that fosters education, research and innovation," Mr Meates says.



"From a public health perspective, the large inner-city green space with walkways and cycle-ways and the Avon River Precinct is great news. It's a plan that will make it easy for Cantabrians to be active."

The Health Precinct will also be within walking distance of the Metro Sports Facility, which will be accessible to people of all ages, abilities and sporting skills. It will have the capacity to host national and international sporting events as well as being a high-performance centre attracting talented athletes.

The Metro Sports Facility will include:

- Aquatic centre with a 50m, 10-lane competition pool, dive and leisure pools
- Indoor stadium – eight indoor courts including seating for up to 2,800 people
- High performance centre with facilities for coaching and training
- Day-to-day recreation, including a fitness centre and outdoor landscaped space
- Performance movement centre with studios and performance space
- Administration facilities and parking

Prime Minister John Key is embracing the new-look city centre which he says will once again be a vibrant hub for business, retail and residential development as well as relaxing spaces.

"The end result [of the Christchurch Central Recovery Plan] will be a new Christchurch, built on the foundation of ideas provided by those who live, work and play there, and adapted to ensure the city can be accessed and enjoyed by all who visit. 🌱



Roger Sutton
CERA Chief Executive

The launch of the Christchurch Central Recovery Plan has to be one of the most significant moments for the people of greater Christchurch since the earthquakes first altered our lives and our entire understanding of the world around us forever.

What we now have is the opportunity to make a new and extraordinary city. A city that people will talk about all over the world and remark upon as an example of what can be achieved - not just imagined.

The Recovery Plan is unbelievably exciting. The concept of the Frame comes from the amazing group of experts we tasked with putting together this Plan and I think it is great. It makes everything more compact and brings greenery and recreational spaces into the city. There are lots and lots of challenges to come and a lot more to do but I think this is an amazing place to start.

What thrills me about the Recovery Plan is it's creating a city for the people. The Frame, Avon River Precinct, an active Square and other green spaces throughout, will make this a place that people want to work in, live in, play in and come to visit.

It's no secret I am a huge fan of cycling so of course I am thrilled to see a priority network of cycleways and pedestrian walkways. It creates a fantastic opportunity for people to move about the city easily, in an attractive environment. If someone works at the hospital for example, and lives in one of the new residential developments on the East Frame, they can simply hop on their bike and safely arrive at work a few minutes later. I also love the idea of installing secure cycle parking at the bus exchange and other key destinations and possibly even changing facilities and cycle repair workshops.

It strikes me sometimes that we have a whole generation of children growing up here who don't even know what a central city is. We will build a giant urban children and young people's playground in the north end of the East Frame. It will be filled with state-of-art play equipment and I hope draw people from afar. Add to that wonderful new swimming and sporting facilities at the Metro Sports Facility and we will have a city for all people but most importantly one for our children – who are our future.

The Convention Centre, Te Puna Ahurea Cultural Centre and Performing Arts Precinct will make this a fantastic playground for adults too, bringing culture and entertainment back to the centre. I hope it all makes people stop and say Wow! – that's where I want to be, this is the city where I want to live.

I, like so many others, am staggered by the vision and the boldness of what the CCDU team produced in such a tight timeframe. The Christchurch Central Recovery Plan will not only produce key projects for the city but it will act as a catalyst for others to follow. The positive flow-on will be felt throughout the suburbs of Christchurch, in Canterbury and in the whole of New Zealand.

I feel extraordinarily proud to be part of this Plan and the recovery of Canterbury. 🌱

Roger Sutton

For homeowners in the green zone

The Canterbury Earthquake Recovery Authority is working with its partners including the Earthquake Commission (EQC), Building and Housing, insurers, and Councils to provide information to green zone homeowners and particularly those in TC3 areas.

We've published a booklet that provides up-to-date information on matters such as the drilling programme, EQC land damage reports and explaining Flood Management Areas. A copy can be ordered by calling CERA on **0800 7464 2372**, or via the CERA website www.cera.govt.nz.

CERA is also carrying out extensive community engagement.

Meetings have been held with members of three main professional groups - valuers, bankers and real estate agents - to talk about green zone TC3 land. The meetings were designed to make sure those professionals have the best information available and get feedback on the issues they are facing.

CERA Deputy General Manager Community Wellbeing Ivan Iafeta says, we want to make sure those people who are providing advice to the public have accurate information and can provide confidence to the community about TC3 land.

A series of meetings have also been held with community leaders. CERA staff and partners have sat down with community board members and representatives of residents' associations, again with the goal of keeping people informed, gaining feedback and ensuring community meetings can best respond to each community's questions.

Seventeen community meetings get underway at the end of this month and will run through until early October. They will be attended by staff from CERA, Building and Housing, EQC, Councils, and insurers.

Mr Iafeta says people can also get advice and information directly from the earthquake hubs in Avondale and Kaiapoi. "We've provided more than 7,700 interviews at the Avondale Earthquake Assistance Centre since it was set up last August and encourage people to keep making use of both hubs." 🔄

- Eight community meetings have been held following Port Hills zoning decisions at the end of June. CERA is currently working with community representatives to best meet individual community information needs
- Community Meetings are currently under way in relation to the Christchurch Central Recovery Plan. Representatives of CCDCU will be available to share information on the Plan
- CERA is engaging in a separate communication process with landowners affected by the Christchurch Central Recovery Plan



Phone: 0800 RING CERA (0800 7464 2372)
Email: info@cera.govt.nz
Web: www.cera.govt.nz

Green zone public meetings

| Month | Week | Date | Time | Venue Confirmed | Address |
|-----------|---------|--------------|----------|--------------------------------------|---|
| August | Week 1 | Monday 27 | 6-8.30pm | Shirley Intermediate School | Corner North Parade and Shirley Road, Shirley |
| | | Wednesday 29 | 6-8.30pm | Christchurch East School | 311 Gloucester Street, Christchurch |
| | | Thursday 30 | 6-8.30pm | Avondale Primary School | 132 Breezes Road, Avondale |
| September | Week 2 | Tuesday 4 | 6-8.30pm | Cobham Intermediate | 294 Ilam Road, Burnside |
| | | Wednesday 5 | 6-8.30pm | Bassett Street Christian Fellowship | 52 Bassett Street, Burwood |
| | | Thursday 6 | 6-8.30pm | St Albans Baptist Church | 64 McFaddens Road, St Albans |
| | Week 3 | Monday 10 | 6-8.30pm | City East Church | 118 Shortland Street, Aranui |
| | | Tuesday 11 | 7-9pm | Kaiapoi North School | 278 Williams Street, Kaiapoi |
| | | Wednesday 12 | 6-8.30pm | Shirley Intermediate School | Corner North Parade and Shirley Road, Shirley |
| | | Thursday 13 | 6-8.30pm | Wainoni Methodist Church | 878 Avonside Drive, Wainoni |
| | | Friday 14 | 6-8.30pm | Opawa School | 30 Ford Road, Opawa |
| | Week 4 | Monday 17 | 6-8.30pm | Shirley Intermediate School | Corner North Parade and Shirley Road, Shirley |
| | | Wednesday 19 | 6-8.30pm | Parklands Baptist Church | 180 Queenspark Drive, Parklands |
| | | Thursday 20 | 6-8.30pm | Saint Mary's Anglican Church | 329 Halswell Road, Halswell |
| | | Friday 21 | 6-8.30pm | Grace Vineyard Church - Beach Campus | 111 Seaview Road, New Brighton |
| | Week 5 | Thursday 27 | 6-8.30pm | Grace Vineyard Church - Beach Campus | 111 Seaview Road, New Brighton |
| | | Friday 28 | 6-8.30pm | EFK Samoan Church Hall | 9 Vili Place, Woolston |
| | October | Week 6 | Monday 1 | 6-8.30pm | Waimairi School |

EQC drilling programme on schedule in TC3 areas

The Earthquake Commission's programme of geotechnical assessments across Christchurch suburbs zoned TC3, for whom foundation repairs or rebuilds are required, is on schedule, EQC General Manager Customer Services Bruce Emson says.

EQC is undertaking a drilling programme on land near homes or on the roadside berm to help structural and geotechnical engineers design a foundation that will meet current building code requirements. This ensures house foundations will perform to a higher standard in any future earthquakes.

Houses in areas designated TC3 have the potential for land damage from liquefaction in any future significant earthquakes. Geotechnical assessments are a requirement of securing a Building Consent for major repairs or building on those properties.

EQC began drilling in the eastern suburbs of the city in March, starting in the worst-affected areas then following the progress

of the Stronger Canterbury Infrastructure Rebuild Team (SCIRT) as they rebuild the city's damaged infrastructure.

Mr Emson says 12 drilling rigs are operating at present. Further detail advising when drilling is occurring in your neighbourhood is available on our website, Canterbury.eqc.govt.nz under 'where we are working'.

"The timeframes are subject to change as we are continuing to negotiate with insurers over a full collaborative programme covering every TC3 property with foundation damage, but we want to give customers in TC3 an indication when their property will be assessed, leading to repair or building work," Mr Emson says.

"This is not a quick process, with in excess of 15,500 individual investigations required. We understand the frustrations TC3 residents have about the length of time it will take for their damaged houses to be repaired or rebuilt. EQC is just one contributor in this complex situation. We have taken the lead by initiating this process and we've invited private insurers to join us."

Mr Emson says EQC has already repaired 1,300 houses without foundation damage in TC3 and another 700 are in the process of being repaired through the Canterbury Home Repair Programme. The first TC3 houses with foundation damage to be repaired under the programme will be completed by early 2013.

"Across Christchurch EQC's focus is on repairing the most damaged houses first (those with over \$50,000 damage) and in TC3 areas where foundations are involved, drilling is required first." 🔄



EQC
Phone: 0800 Damage (0800 326 243)
Web: www.eqc.govt.nz

Residential red zone

Canterbury Earthquake Recovery Authority has a huge focus on the safety of residents still living in the residential red zone.

CERA meets regularly with a residential reassurance group which includes representatives of Police, the Fire Service and other emergency service providers as well as the Christchurch City Council and the Waimakariri District Council. Other stakeholders such as Red Cross are invited as appropriate.

A number of measures are in place to try to reduce the risk of vandalism and other opportunistic crimes to vacant properties.

- trialling the use of security patrols using a private security firm
- stopping mail delivery (and where possible circular delivery) to Crown owned properties from the date of settlement
- working with Work and Income to establish a proactive property maintenance programme including grass cutting
- establishing a contract with a preferred supplier to undertake reactive property maintenance where neighbours have identified a risk
- continuing to meet regularly with Police and the Fire Service to work collaboratively to identify and address safety and security issues
- requiring all CERA accredited contractors to carry CERA-issued identification, and also a CERA-approved Access Authority Form to be on Crown owned property
- trialling prohibited access signs on a small number of Crown owned properties in the Kaiapoi area to see if this will prevent opportunistic crime and help neighbours to identify which properties are Crown owned

CERA Security Manager Brenden Winder says safety and security in the residential red zone is a priority.

“Two security cars patrol 24/7 in the residential red zone including the Port Hills area and multi-agency reassurance patrols have also increased.

Overall, the Police and Fire Service are very satisfied with the measures we have in place but we are constantly reviewing how to do things better. In the meantime, we urge people living in those areas to be vigilant and to contact the Police if they see anything suspicious – or by calling CERA (0800 7464 2372) to report issues with Crown owned properties.”

Progress is being made clearing properties that have been settled as part of the red zone programme:

To the end of July, the authority to clear 938 properties had been issued with 480 clearances completed.

The Christchurch City Council has 21 staff working in the residential red zone. To-date they've carried out maintenance on more than 1,100 properties.

In the Waimakariri area, two staff are carrying out maintenance and have worked on almost 400 properties. 🌱

Red zone data to the end of July:

Total residential properties in the red zone (incl 305 Port Hills properties) **7,560**

Consent forms returned (incl 155 from the Port Hills) **6,824**

Offer letters posted **6,488**

Homeowners who have signed a sale and purchase agreement **5,501**

Homeowners who have signed a sale and purchase agreement and completed settlement **4,350**

Overall, 77 percent of homeowners who have signed a sale and purchase agreement have selected option 2. That's where CERA buys their land and they settle separately with insurers over built structures.

Red zone timeframes:

Property owners have up to 12 months from the date on their letter of offer from the Crown or until 31 March 2013, whichever comes first, to accept the Crown offer by submitting a signed Agreement for Sale and Purchase to the Crown via their lawyer.

Property owners in South New Brighton and Southshore who were zoned red on 18 May 2012 have up to 12 months from the date of their offer letter or until 31 May 2013, whichever comes first.

If property owners do not submit a signed Agreement by that date, the Crown offer will expire and will no longer be available to accept.

Information and assistance is available. Please call CERA on **0800 RING CERA (0800 7464 2372)** 8am to 5pm weekdays if you require assistance. You can also visit the Kaiapoi Earthquake Hub at 11 Cass Street in Darmlay Square, or the Earthquake Assistance Centre at the Avondale Golf Club to talk to someone face-to-face.



Now available until 31 August.

There's a better way to avoid the flu

Flu is in our Canterbury communities now.

The best way to protect you and your family is to get vaccinated.

The vaccine is free for under 18s, over 65s, pregnant women and people with chronic illness.

For more information, call your general practice team or visit www.fluinfo.org.nz

Canterbury District Health Board
In Christchurch & Waimakariri

Reliable, robust wastewater services for city

SCIRT's aim is to rebuild infrastructure that gives people security and confidence in the city's future.

This means that designs for piped services like wastewater - sewage, as well as laundry, bathroom and kitchen wastewater - have to be resilient and take into account the changed conditions as a result of the earthquakes.

How have things changed?

- Some properties are lower than they were before
- Some near rivers or waterways are at risk of lateral spread
- Others are experiencing the effects of higher groundwater

For many of us, the image of portaloos on our streets is a powerful emblem of the earthquakes' disruption to our lives. For the future rebuild, resilient wastewater systems are a high priority.

As a result, SCIRT is rolling out some new and improved wastewater management systems, starting in Halswell.

Pressure sewer pump systems are already used in many parts of New Zealand – Rodney District, Rotorua, Fairlie, as well as Christchurch's new Quarry View subdivision, Kennedy's Bush Road. In future, they will be used in several areas of Christchurch and in new subdivisions. These systems provide more reliable and robust wastewater management for residents, in relation to earthquake resilience, than the traditional gravity-fed system.

City Care, as part of SCIRT, is currently working on a pressure sewer pump system for 36 properties in Halswell. The main reason for the installation of sewer pressure systems in Halswell, located on private properties, is due to land levels dropping and the potential for future movements due to earthquakes.



Remaining on the old gravity wastewater system would only be possible by either raising the property's ground level, which is impractical over a large area, or increasing the depth of an already deep wastewater main. This would make earthquake repairs and on-going maintenance of the pipe a difficult, disruptive, time-consuming and expensive process.

There are many good reasons for choosing pressure sewer systems:

- No smell or noise
- Shallower, more flexible pipes
- Can still operate even if the pipe moves
- More resilient and better able to cope with seismic events
- Do not rely on gravity to transport wastewater
- Can provide storage during a power loss

- An average maintenance call out of once every 10 years
- Nominal cost to run the electric pump of \$20- \$25 annually ♻️



SCIRT
Phone: 03 931 8999
Email: info@strongerchch.co.nz
Web: www.strongerchristchurch.govt.nz

Natural Environment Recovery Programme

At the end of May Environment Canterbury welcomed the announcement by Earthquake Recovery Minister Gerry Brownlee that it would lead the Natural Environment Recovery Programme, an important part of the Canterbury Earthquake Recovery Strategy.

Environment Canterbury is excited to partner with Christchurch City Council, Selwyn District Council, Waimakariri District Council, Ngāi Tahu and others in shaping and implementing the recovery programme.

Chair of Commissioners Dame Margaret Bazley says Environment Canterbury relishes the challenge of leading the Natural Environment Recovery Strategy.

"We will work closely with our partners and with the NGO sector to deliver a steady recovery of the environment integrated with the other CERA work streams.

"We will focus on identifying where there are gaps and ensuring all recovery activity in the natural environment is coordinated and focused on priority recovery needs."

On 13 July Environment Canterbury presented a proposal to the CERA Recovery Advisory Committee on how to develop the natural environment recovery programme. This involves documenting former trends and the pre-existing condition of the natural environment, including the impact of the earthquakes as well as outlining the immediate response and recovery initiatives plus the current on-going work programmes.

All which leads into the first hui in September which will discuss and decide the issues and priorities going forward. The process also makes use of the four zone committees established under the Canterbury Water Management Strategy for issues connected to water management.

This will make sure the recovery is integrated with the long term outcomes sought for water across greater Christchurch. The identified Air and Waste management goals from the recovery strategy natural environment section will be led by Environment Canterbury too; with the local councils, CERA, Ngāi Tahu and the CDHB providing advice and support. ♻️

"We will also develop ways to take advantage of the expertise, energy and passion that the NGO sector and volunteers will bring to the Natural Environment Recovery Strategy. We already appreciate their large contribution in areas such as biodiversity and we have noted the excellent job they did in the aftermath of the earthquakes themselves." - Dame Margaret Bazley



ENVIRONMENT CANTERBURY
Phone: (03) 353 9007
Web: www.ecan.govt.nz



A building that matters

More than 16 months after the February earthquake, the doors of Ronald McDonald House South Island's quake-damaged main wing have finally reopened.

The House welcomed its first families into the newly repaired accommodation facility in June.

The three-storied building suffered significant damage in the February earthquake, with four metres of instantaneous water movement underneath causing it to be forced upwards. In a ground-breaking engineering procedure, Fletcher Construction has lowered the building to its original position.

Throughout this time the House was operating with only 14 of its 27 rooms available to families.

"Having the House back to full capacity is a significant milestone in what has been a challenging year," says General Manager Emma Jones.

"Our sincere thanks must go to Fletcher Construction who have worked extremely hard to make this happen. It is fantastic to see the little ones being able to play in the art room and designated play room again, and having the large kitchen and dining room back."

Ronald McDonald House South Island provides free accommodation and support to families who must leave their community and travel to Christchurch for their child's hospital care.

As many as 27 families could be staying at the House at any one time - for some it is just an overnight stay, while for others the House becomes a 'home away from home' for many months and frequent visits.

Since opening in 2003, the House has provided more than 80,000 nights of accommodation to nearly 3,000 families from all over the South Island, lower North Island and sometimes overseas.

www.rmhsi.org.nz

Central City bus tours take off in Christchurch

A new bus tour giving people a close-up look at Christchurch's central city red zone is proving popular beyond expectation.

The tours started in mid-July and are operated by Red Bus in conjunction with Canterbury Museum, which supplies the commentary.

Red Bus Chief Executive Paul McNoe says in the first two weeks two-thousand passengers went on the tour, with many trips sold-out. Advanced bookings have been taken through to October.

"The interesting thing for us is that 70 percent of the bookings are coming from locals. We expected there'd be comparatively less interest from residents after public bus tours and the opening of the Cathedral Square walkway, last year. But not only is there strong interest from locals - they're also taking a lot of visitors from out of town with them, showing them the city effectively. It really is a national and international audience."

Mr McNoe says the aim of the tours isn't just to see what's been lost but to show that Christchurch is open for business and is moving forward.

"We very much wanted to tell a story about the event but also where we're going. It's much more than just going to see destruction in the central city."

Canterbury Museum Director Anthony Wright agrees.

"The aim is to normalise the area so the red zone isn't seen as a fearful place. We're trying to be level-headed about what's there, knowing that people are seeing the old things go but they're also seeing hope for the future. We're taking the area from a place of horror to hope in the minds of the people of Christchurch."

UPDATE FROM NZ TRANSPORT AGENCY

Upgrade of major east Christchurch intersection a hit with drivers

The recently completed \$3.4M upgrade of SH 74 QEII Drive/Marshland Road intersection including new traffic signals, is cutting travel times and making users of the busy route very happy.

Traffic numbers on this road have grown considerably since the earthquakes and the roundabout, used to manage traffic at the intersection, was struggling to cope. This situation resulted in serious traffic congestion at this major intersection during peak morning and afternoon travel times, causing frustrating delays for motorists.

The NZ Transport Agency has heard of many favourable comments from road users about the new signalised intersection. A number are reporting reductions in their travel times of up to 20 minutes, others say traffic flows are much better and the intersection feels much safer.

The upgraded intersection is also good news for heavy vehicle operators too, offering them greater safety and improved travel times on what is the main road access



The new SH74 QEII Drive/Marshland Road intersection is cutting travel times and stress level for motorists on one of the busiest routes in the quake hit eastern suburbs of Christchurch.

to the Port of Lyttelton. NZ Transport Agency Regional State Highways Manager Colin Knaggs says having this key route operating as efficiently as possible is important, as it carries much of the road freight needed to grow the Canterbury economy.

TEDxEQChCh returns to the city

In a few weeks, TEDxEQChCh 2012 will bring together leading local, national and global thinkers and doers to provoke and inspire thought over a future vision for Christchurch.

Last year's TEDxEQChCh event was a sell-out, with inspirational presenters including ex San Francisco Mayor Art Agnos and Architecture for Humanity CEO Cameron Sinclair. This year's international line-up includes Alexandros E. Washburn, Chief Urban Designer of the City of New York Department of City Planning, Vibeke Linde-Strandby, founder and partner in ai architectural intelligence ApS, Copenhagen, and US-based artist Kiel Johnson, as well as Kiwis Jane Henley, CEO of the World Green Building Council; Ian Taylor, Managing Director of Animation Research, and Sam Johnson.

TEDxEQChCh Curator Kaila Colbin says, it will connect possibility with practicality, lifting us from the rubble of our daily reality and pointing us towards the vision of our shared future.

TEDxEQChCh 2012: Uncontained will be held at the Aurora Centre for the Performing Arts on Saturday, 1 September.



Check building work is consented before you buy

Before purchasing a commercial building it pays to check that any building work since September 2010 was signed off by the Christchurch City Council.

This could include a code compliance certificate, or where work was done in an emergency, a certificate of acceptance.

Building Operations Manager Ethan Stetson says important considerations include the history of building work, whether required consents were granted, and if inspections were done to prove that the work met the conditions of the consent.

"You may want to have a structural engineer help you investigate and make sure you fully understand about the condition of the property."

"Not all building repairs require building consents but the Council is able to advise on this. Where repairs are done which should have had consents then problems can arise. The issues which may come up include the level of confidence for the safety of people who enter the building, ongoing insurance coverage, and how your equity in the building will be maintained in the future."

Under the Building Act the owner of a building is responsible for any work which has been completed. Even when building work has taken place without a building consent before a building is sold, the new owner still has the responsibility for



making sure the commercial building meets the building code.

Mr Stetson says that it is important to check if repairs which have been carried out since the earthquakes are complete, and have been inspected.

"I'd also recommend that you review the property file before any purchase. Look for the documents supporting any repairs - consents, certificates of acceptance, build inspections and the like. The property file will help you and your engineer understand all the building work that the Council knows about. Cross check for any obvious repair work which is not covered by Council documents."

For more information visit www.ccc.govt.nz/goahead



CHRISTCHURCH DISTRICT COUNCIL
 Phone: 03 941 8999
 Web: www.ccc.govt.nz
 Email: info@ccc.govt.nz

Selwyn lifestyle expos organised for new residents

Recognising that Selwyn is attracting a host of new residents, the District Council and community are running two Expos in Leeston and Darfield next month.

Expo Leeston has been organised by Leeston local Sarah Crozier to show off the clubs, sporting groups and other organisations that are looking for new members. Expo Leeston takes place on Sunday, 23 September from 10am to 2pm at the Leeston Rugby Club. More information for standholders or newcomers is available at www.leeston.co.nz.

The Darfield Expo takes place at the Malvern Recreation Centre in Darfield on Sunday, 30 September from 10am to 2pm.

Darfield Expo organiser Diane Chesmar says the purpose of the Expos is to help the many newcomers who have shifted into the district, mostly from Christchurch city, following the earthquakes.

"This is a chance for people to find out about the huge range of activities, clubs, organisations and sports available in Selwyn District. Joining a club or organisation or becoming a volunteer for something like Neighbourhood Support or the Volunteer Rural Firefighters is a great way of getting to know your community. The Expos are both free and families are welcome," she says.

For more information on the Darfield Expo, contact Malvern Community Board Chairperson, Jenny Gallagher on 03 318 1784, jenny.gallagher@selwyn.govt.nz



SELWYN DISTRICT COUNCIL
 Phone: (03) 347 2800
 Web: www.selwyn.govt.nz

The Waimakariri District Council's Earthquake Recovery Programme is progressing and regular updates are available in the local papers and on the New Foundations website at newfoundations.org.nz

Community Facilities Update

Kaiapoi Aquatic Centre - The design work for the repair and rebuild of the centre has been completed and tenders have closed. Council expects a contract will be let by mid-August.



The majority of the project is being funded by Council's insurer and the Prime Minister has also announced a Christchurch Earthquake Appeal Trust grant of \$1.1 million towards the estimated \$5 million cost of repairing the centre.

Rangiora Town Hall / Performing Arts Extension - Council staff are in the process of engaging engineering consultants and Fulton Ross is the architect for this project.

Kaiapoi Library/Service Centre/Museum - Tenders have closed for the deconstruction of the existing Kaiapoi Library/Service Centre, and Council will be looking to let the contract shortly. Deconstruction will be completed by the end of the August and then geotechnical testing will be undertaken.

Rubble Rousers

In the tired, broken parts of Kaiapoi, you would expect to see vacant lots, spaces disturbed by dust and rubble, and no signs of creative life. But the Rubble Rousers are changing the game in Kaiapoi - dressing up and reinvigorating the town one step at a time.



For the group's first project, Kaiapoi North Kidsfirst Kindergarten was invited to help decorate the drop zone fencing around the ANZ bank on Williams Street. The second project saw an outdoor art gallery installed at the Fialto site with the brawn of the Kaiapoi Menz Shed. The panels were painted by Wai Youth.

For its third project, the team has been working on the old Little Rooster Site on Williams Street. The R13 Trust, under the direction of sculptor Mark Larsen, designed, created and installed large, colourful wooden flowers, with materials donated by McAlpines Mitre 10.

As a backdrop for the flowers, a youth group from Teen Missions International has been busy painting a mural of the mountains and sky.

If you can help out with providing building materials or supplies, or offer any items that can be used in projects, Rubble Rousers would love to hear from you. Please contact Linda Dunbar 03 311 8900 extn 2730 or 021 246 1757.



WAIMAKARIRI DISTRICT COUNCIL
 Phone: (03) 311 8900
 Web: www.waimakariri.govt.nz