

# Earthquake recovery update



## SCIRT UPDATE

- 60** projects valued at \$63 million, currently being constructed around Christchurch

---

- 134** projects valued at \$532 million, currently being designed, ready for construction

---

- 150** projects valued at \$54 million in process of being handed back to asset owners

---

- 100-150** projects expected to be underway at any one time through the city when work peaks

---

- 40** million dollars (up to) work planned to be completed each month when work ramps up

---

- 15,000** m<sup>2</sup>\* of road pavement laid

---

- 10** km\* wastewater pipe laid

---

- 8.5** km\* fresh water pipe laid

---

- 617,853** work hours recorded\* (staff and contractors)

---

- 100** plus items of construction plant in use on any given day currently

---

- 120** separate project work notices distributed to 22,650 letterboxes\*

---

- 136** SCIRT website updates [www.strongerchristchurch.govt.nz](http://www.strongerchristchurch.govt.nz)\*

---

- 415** face-to-face interactions with people affected by SCIRT'S work\*

---

- 270** responses to project 'hotline' phone numbers\*

---

- 5** presentations to schools close to where SCIRT is working\*

\*Statistics from Nov 2011 to Feb 2012

### SCIRT CONTACTS

[www.strongerchristchurch.govt.nz](http://www.strongerchristchurch.govt.nz) Twitter: @SCIRT\_info.  
[info@strongerchch.co.nz](mailto:info@strongerchch.co.nz) Also: Sign up to SCIRT weekly e-newsletter.  
 Phone: 941 8999



Rico Pradhan, 5, of Brooklands enjoys the popular "I Love New Brighton" family day, where both adults and children joined sports and playground events and were asked to write recovery "wishes" for the far-eastern suburbs. A new group, tentatively called Renew Brighton, but including suburbs such as Queenspark, Parklands, Waimairi Beach and Southshore, collated the 183 wishes which it hopes to use in community-led revitalisation proposals.

## \$2 billion work programme underway

**In coming months as infrastructural works move into top gear, the city will be a hive of construction activity, SCIRT, the Stronger Christchurch Infrastructure Rebuild Team, says.**

The repair of the city's 'quake-damaged, publicly-owned retaining walls, roads and its fresh water, waste water and storm water networks is one of the largest and most complex civil engineering programmes ever undertaken in New Zealand. SCIRT's programme of work will take around five years and is expected to cost in the order of \$2 billion.

There will be up to 150 work sites open at any one time and SCIRT will be delivering up to \$40 million of

work each month, about eight times the amount the Christchurch City Council would carry out in an average year. Some works will take several months, depending on complexity of the task.

Examples of SCIRT's good progress include rebuilding the wastewater mainline in Woodham Road, Wainoni, which carries a significant amount of the city's wastewater. This will be finished in late April. Rebuilding the northbound lane of Fitzgerald Avenue (Avonside Drive to Cambridge Terrace), a strategic transport route, will be finished in May. Work has begun also on the rebuild of publicly-owned retaining walls in Lyttelton, many of which were severely damaged.

## Caution notices

**Section 45 notices, or 'red stickers', have been placed on shipping containers used as rockfall barriers along Sumner and Redcliffs.**

The notices are not due to increased or new risk, but as an additional safety precaution.

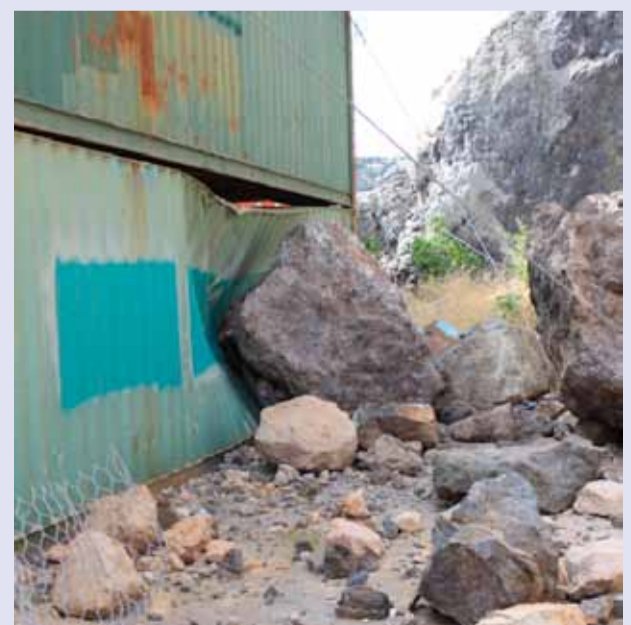
CERA Cordon Manager Brenden Winder says there have been numerous incidents of people walking on the wrong side of the containers, mostly because they don't understand the risk.

"The containers are there to shelter the road and its users from rockfall. But we've seen plenty of instances of women with prams walking behind the containers, or cyclists and joggers doing the same, to avoid traffic. The reality is - in even a small earthquake you don't want to be behind those containers. Rocks the size of small cars are more than capable of coming down the hill in an instant."

The section 45 notices have previously only been used to prohibit entry to buildings, but the legislation can also be applied to specific areas. Some stickers have been placed on containers that sit in front of houses along Sumner's Nayland

Street. Those homes are already out-of-bounds by the Christchurch City Council, using its section 124 notices.

The CERA notice prohibits entry behind the containers and to the land around a house.





**Gerry Brownlee**  
Canterbury Earthquake  
Recovery Minister

As I write, I am looking forward to the first Crusaders home game in Christchurch since the damage to AMI Stadium sent the franchise on a permanent road trip. I'm sure many of you are too.

The new Christchurch Stadium in Addington is on track for completion for the match on 24 March 2012.

The match is not just a rugby game however. This new stadium is representative of Christchurch's ongoing recovery and rebuild. It will host not only rugby, but also football, cricket, music concerts and potentially other community events.

The project has been extremely challenging - to build an entire stadium in less than 100 days - construction began on 20 December 2011. As with most challenges, it has also been very rewarding. I'd like to pay tribute to the efforts of workers onsite, and the encouragement we have received from Cantabrians supportive of an outdoor venue, all of which has been terrific.

In particular, I'd like to also thank the local residents for their patience, tolerance and understanding during this construction period.

While central government is underwriting the project, we are most grateful for funding received from the Christchurch Earthquake Appeal.

This past week I again visited the last residential areas which remain zoned orange. Rezoning these areas is a major challenge. The time taken to analyse the options and make this decision has been essential, however I am determined that these zoning decisions will be made very soon.

I also visited some areas in the Port Hills white zone. The extent of damage to some homes is difficult to comprehend and heartbreaking for those residents. The Port Hills are complicated. Issues of cliff collapse, landslide and rock fall must all be thoroughly investigated to ensure people are returned to their homes with an expectation of an acceptable level of safety.

We are working with the Christchurch City Council, which is responsible for the s124 notices on many homes. We are expecting completion very soon of expert reports on these land issues in order for Council to complete the s124 process and for CERA to complete land zoning.

I know it is frustrating for many of you in the Port Hills, some of you unable to even live in your homes, and many feel progress is too cautious. However, I saw for myself land close to cliff edges which is continuing to move, significant dents in the back of protective shipping containers caused by rocks hitting them, and a number of new rocks which have fallen very recently.

A timeline for the completion of the Port Hills work has been established and I have made it very clear I expect that timeline to be met. It is available on the CERA website [www.cera.govt.nz](http://www.cera.govt.nz)

So I ask for your patience a little longer.

In the meantime, I'd like to wish everyone a Happy Easter, and good luck to the Crusaders!

*Gerry Brownlee*



**Roger Sutton**  
CERA Chief Executive

The season has clearly turned to autumn and those morning bike rides are noticeably cooler. Some will welcome the onset of winter, especially thousands of locals who enjoy snow-based sports and many businesses relying on tourists visiting the facilities we're lucky to have in the nearby Southern Alps. But with the change of seasons, of course, comes a need to focus a little more on health for people most vulnerable.

Last winter EQC did a great job of getting around the thousands of people needing new heat sources, which was invaluable once those snow storms hit. With winter rolling around again, I got together this month with four health professionals to discuss our main issues for this year, and how we can help each other. That discussion was filmed and was screened on Maori Television, and is now on our website [www.cera.govt.nz](http://www.cera.govt.nz). It's a half-hour programme and really worth a look, given the great advice from experts who took part.

Take a peek also at the website [www.healthychristchurch.org.nz](http://www.healthychristchurch.org.nz) which has many great avenues of support, and even just ideas for things to get out and do with the family. It might not be your health in question; it might be your partner or parents. We want you to know you are not alone, whatever the new season brings, and there is help and advice out there.

A quick update also on the progress in the CBD: The Crowne Plaza is looking like a slab of Swiss cheese at the moment. The floors are almost all stripped bare with just the concrete framing left. That building will come down one side at a time so it will be an interesting process to watch from the sidelines.

The latest contract awarded for a big demolition is the PricewaterhouseCoopers work. That has begun with the strip-out of every floor and in a few weeks the demolition proper will begin, involving the use of "Twinkletoes" - a huge crane that has been brought over from the United Kingdom to work here. Demolition will take about 40 weeks, so by Christmas we will once again have another major change to our skyline.

It's hard not to have mixed emotions about the process. The deconstruction of our city is sad, but the rebuild will be positive and exciting. Just a temporary taste of what our local visionaries may have in store in future can be seen elsewhere on this page, with the new stadium, Gap Filler projects and the 'popucity' website. Let's prepare to celebrate winter, as these entrepreneurs are. Yes, we need to take more care in the rebuild and recovery in the colder seasons. But optimism will help us move forward into a healthier, unique and, can I predict, an amazing new environment in this region I love.

# Briefs

## Christchurch Stadium

The new Christchurch Stadium in Addington is on schedule to open for the Crusaders-Cheetahs game on 24 March. This 'multi-purpose venue' with capacity of 18,000 can be up-sized to 25,000 for international sporting fixtures. It is the first and largest sports venue in Christchurch following the 'quakes and has been built in less than 100 days, helped by recycled components - including seating, lighting, food and beverage outlets and even the turf, harvested from AMI Stadium.

## 140,000 CBD visits

By publication date, the head-count for CERA-escorted public tours into the cordoned CBD was about 140,000, ie 110,000 participating in Cathedral walkway tours and 30,000 in public bus tours. These figures do not take account of those joining more than one tour, but exclude people entering on official business, such as contractors.

## 1,500 plus at meetings

More than 1,500 people attended six public meetings at Sumner, Cashmere and Lyttelton in the past few weeks where CERA and other agencies explained geotechnical and related issues in the Port Hills white zone.

## 12,000 page views

Christchurch & Canterbury Tourism [www.christchurchnz.com](http://www.christchurchnz.com); the local official Regional Tourism Organisation, is reporting great overseas and New Zealand interest in its new website and blog [www.popupcity.co.nz](http://www.popupcity.co.nz). People are using it to find latest 'pop-up' bars, outdoor art installations or other unique developments which help attract tourists. After just two months live, the site has generated over 12,000 page views with little promotion outside word of mouth and tourism industry contacts. To add new places email [sheena.crawford@christchurchnz.com](mailto:sheena.crawford@christchurchnz.com)

## Americans to help

Young Los Angeles rugby players in Christchurch next month are hoping to join a community working bee with Rebuild Christchurch's Let's Get it Done campaign. Various recovery projects are being considered. Burnside High School is hosting the group's 20 girls and St Bedes College 20 boys; both playing the visitors in an Easter rugby tournament. Cloud South, a New Zealand film company, is making a documentary of the trip.

## Dance-O-Mat

Gap Filler has just launched 'Dance-O-Mat', a dance floor at the corner of St Asaph and Manchester Streets. With coin-operated lighting and sound courtesy of a converted washing machine (ie. laundromat to ... Dance-O-Mat) the outdoor floor has been created in response to the loss of dance studios around the city. Anyone is welcome to plug in their MP3 player/Ipod/phone and to get dancing. "We wanted to give the Christchurch community a unique dance experience while bringing life to our broken city - something to lift the spirits and raise the heart beats of the people," Gap Filler's Coralie Winn says. A weekly blackboard booking system is on site, but Gap Filler asks those who wish to book a regular slot, or hold a performance or large event of more than 50 people to email [danceomat@gapfiller.org.nz](mailto:danceomat@gapfiller.org.nz) first. Feedback and questions can be sent to the same address. For updates see [www.facebook.com/GapFiller](http://www.facebook.com/GapFiller)

## New 'pop-up' cinema

A temporary outdoor cinema, made possible by the New Zealand/France Friendship Fund, has sprung up on a rear site at the corner of Madras and St Asaph streets.

The film project has come after a design competition held by the Gap Filler initiative, with the winning design by Barnaby Bennett, Nick Sargent and Mark Leong. It has been built with the help of CPIT, its students and Gap Filler volunteers.

Called 'Playtime', the project is partly inspired by the French film-maker Jacques Tati's film 'Playtime' (1967) and has started with free outdoor screenings of Tati's films. The site will be used also for talks, workshops and performances. See 'Events', page 4, for film timetable or <http://www.gapfiller.org.nz/play-time-gap-fillers-tati-design-competition/>

Gap Filler sees Playtime as a vanguard for other creative projects on site over the next six months, such as 'pop-up' studios and galleries. Anyone with ideas of ways to make use of the site can email [trent@gapfiller.org.nz](mailto:trent@gapfiller.org.nz)



# Deon and team 'get it done'

**When Deon Swiggs left school he trained to be a navigation officer in the Royal New Zealand Navy.**

Little could he have realised that just a few years later he would be playing a key role helping Christchurch residents navigate their way through uncertainties generated by earthquakes.

Now 25, and recently a nominee for New Zealander of the Year, Deon was inspired by the 'quakes to work out what he could do to help. So, after September 4, 2010, he founded Rebuild Christchurch.

Early priority was a single website linking 'quake-hit residents to other sites and agencies they needed to contact. Even Deon, who readily admits being no computer expert, was surprised at the number of hits on Rebuild Christchurch's website. Clearly there was a need being met by his work.

"In the first week it became clear people were looking for information in one place," he says. "There was a lot of need out there, and people who wanted to do something. I wanted to bring them together."

Since then the Rebuild Christchurch Foundation has been set up; partly for donations the group needs for its work. Meeting Deon, who takes no wages, one is impressed by his passion; not just a commitment to assist fellow residents but a drive for innovative solutions for Christchurch's future.

Rebuild Christchurch came up with "Let's Get It Done". The concept was trialled last September - coordinating volunteers in a weekend clean-up in worst-affected suburbs. Deon and



Rebuild Christchurch's Deon Swiggs and Ali Jones at Wainoni's Let's Get It Done day.

his team's philosophy is one of "ground roots"; not focusing on bureaucracy but simply getting out and quite literally getting it done. So Rebuild Christchurch also organised "Project Christmas" - presents for families suffering 'quake damage. And Deon is clearly proud that, even after 23 December's 'quake, the presents were still delivered.

Another Let's Get it Done working bee in late February drew about 300 volunteers completing 100 community jobs, ie. removing rubble, clearing silt, mowing lawns, and planting

trees at a suburban school.

Deon with his team including Communications and Media Manager Ali Jones, Tech Manager Ben Young and other members of the trust Wendy Davie and Anthea Livingstone are planning four similar events and afterwards are keen to play a role in enhancing public spaces in Christchurch.

"I'm one of those sorts of people who, when I start something, I want to finish it," Deon says.



## River of flowers

Andre, Janina and Holly Konia (21 months) throw flowers into the lower Avon River at 1pm on 22 February, joining hundreds of others along the banks as part of the "River of Flowers" event. The project was led by Healthy Christchurch and the Avon-Otakaro Network and grew from a Healthy Christchurch and CERA poll late last year on how Cantabrians wanted to commemorate the 2011 earthquake's first anniversary.

## Free financial advice

**Help is at hand for Canterbury's residential red zone property owners who need to make important financial decisions, with a new free individual financial advice consultation service now available.**

The Christchurch Earthquake Appeal Trust has funded the Commission for Financial Literacy and Retirement Income (formerly the Retirement Commission) to set up a financial advice service which provides residential red zone property owners with access to qualified professional financial advisers for free one-on-one financial advice consultations.

Retirement Commissioner Diana Crossan says the free consultations are designed to help people understand their financial position and options.

"Everybody's situation is different, along with their goals and ideas about where and how they want to live. The financial decisions red zone residents will be making will be some of the biggest decisions of their lives. The opportunity to talk their individual financial issues and concerns through with a professional adviser one-on-one could help them make the best financial decisions for their situation.

"The free advice is being provided by professional financial advisers, who are all donating their time and expertise," Diana says.

Trustee of the Christchurch Earthquake Appeal Trust, Dr Rod Carr says the one-on-one consultations are an important service to help residents make financial decisions and get on with their lives.

The financial advice consultation service follows the Commission's Red Zone Financial Decision Guide booklet, which was designed to help residents with their financial decisions about the Government's offer to purchase their property and what to do with the payment they will receive.

### What's on offer – at a glance

- Residential red zone property owners can make an appointment to see a financial adviser by contacting the CERA Avondale Earthquake Assistance Centre on: **0800 7464 2372** or the Kaiapoi Earthquake Hub on: **0800 639 000**.
- Visit [www.sorted.org.nz/redzone](http://www.sorted.org.nz/redzone) for further information.
- Consultations are one to one-and-a-half hours long. Residents will work through a simple action plan or list of things to think about and do, to help them in their financial decision making.
- The free advice will be provided by a group of experienced, local professional financial advisers. The advisers do not represent the Commission, they are from a number of well-known and reputable organisations and are all Authorised Financial Advisers (AFAs).
- AFAs are authorised by the Financial Markets Authority (FMA) and have to meet minimum qualification requirements and must also follow a code of professional conduct. They can provide advice on a range of things from simple term deposits, insurances and mortgages, to other investments and financial planning services.
- The advisers are not there to sell people products and they are not charging for their advice – so there is no cost to residents who seek advice.
- A disclosure statement will be available on request and free of charge from the advisers.



# 'HomeShare' helps recovery

**A new service has started this month for older people in Parklands who would like a day out in a homely environment.**

'HomeShare', a collaboration between Presbyterian Support Upper South Island (PSUSI) and local community-based services or interest groups, is now hoping to open in other worst-affected suburbs.

"We are looking for enthusiastic hosts, especially for the New Brighton, Aranui, Linwood, Redcliffs and Spreydon areas," Regional HomeShare Coordinator Sue Holton said.

HomeShare involves up to four older people hosted free in a private home one day per week. It has been running successfully in Ashburton, North Canterbury and the West Coast by PSUSI for a number of years.

The service is targeted at older people experiencing loneliness or social isolation, or who simply would like to enjoy companionship and activities in a host's home within their local community. It offers participants the

chance to develop new skills, follow interests, to make new friends, or perhaps even meet old acquaintances.

Morning and afternoon teas and a cooked lunchtime meal are supplied. The day-out for the participant could also be time for a carer to keep appointments or to be involved in their own activities or interests.

Hosts and volunteers receive induction training and ongoing supervision. They will be well-supported by medical and social services experienced in the care of older people.

"If you are caring and empathetic with sufficient time and commitment to provide a support service for older people in your home, or would like more information about being a host, volunteer or as a participant and would like us to come and talk to you, please contact me," Sue said.

Sue Holton (Regional HomeShare Co-ordinator, Registered Social Worker) **03 313 8588** or **027 712 5452**; [susanh@psusi.org.nz](mailto:susanh@psusi.org.nz)



## 'Fresh start – new growth'

"A garden built from the ruins of our city," is how designer Dan Rutherford (pictured) described his creation, one of the gold-medal winners at this month's Ellerslie International Flower Show.

Almost all materials were recycled from earthquake ruins, starting with a pile of 20 tonnes of stone, timber and twisted steel.

Called "Fresh Start - New Growth", the plants represented the people, Dan said, as well as a "new, fresh healthy growth of ideas... growing around the ruins of our city, adapting to the changing environment, and entwining themselves into the existing fabrics and structures. Thousands of tiny native plants... communicating a message of hope and strength."

## Checklist for red zone residents

Property owners have nine months from the date on the top of their offer letter from the Crown to select an option and submit a signed sale and purchase agreement to the Crown via their lawyer.

**For those who have decided on options and accepted the Crown offer, the process is:**

- On the settlement date:
  - you or your tenants must be out of the property
  - the Crown will make the final payment to you for your property
  - the Crown will become the owner of the property.
- Chattels must be removed by the settlement date. These are items that are not attached to your land or the buildings on your land and can be removed without causing damage to your property.
- You cannot store anything on the property or come back to the property after the settlement date.
- You must leave the property safe. You should contact your council if you have any questions about the disposal of hazardous materials.

### Moving out checklist

- Organise storage for anything you cannot move into another home straight away.
- Tell trusted neighbours you are leaving and give them your contact details.
- Redirect your mail.
- Get a final power and/or gas reading.
- Close your accounts with utility providers (power, telephone, gas).
- Leave the property safe:
  - Pools and spas must be fenced in compliance with the Fencing of Swimming Pools Act (1987).
  - Drains must be covered.
  - All rubbish and hazardous materials must be removed (contact your council or Environment Canterbury for more information).
  - If you have council wheelie bins, leave them onsite (preferably empty).

## EVENTS

### Kids Entertainment with Shad Rutherford

or The Magical Fairy at The Watershed  
10.30am every Sunday  
Watershed Bar & Restaurant  
[www.thewatershed.co.nz](http://www.thewatershed.co.nz)

### Gap Filler Movie

22 March, 8pm  
Monsieur Hulot's Holiday (1953, 114mins)  
Cnr Madras and St Asaph Streets  
Introduced by Julia Taylor, architectural graduate  
[www.gapfiller.org.nz/play-time-gap-fillers-tati-design-competition](http://www.gapfiller.org.nz/play-time-gap-fillers-tati-design-competition)

### Beckenham School Twilight Fair

23 March, 4:30-7:30pm  
Beckenham School

### Gap Filler Movie

23 March, 8pm  
Mon Oncle (1958, 111mins)  
Introduced by John Christoffels, Lecturer in Film,

### Heal Christchurch

24-25 March, 9am-6pm  
[www.healchristchurch.com](http://www.healchristchurch.com)  
Geo Dome

### Autumn Racing Carnival

24 March, 14, 21 April, 5 May.  
Racing from 11.30am each day  
[www.riccartonpark.co.nz](http://www.riccartonpark.co.nz)

### Thomson Park Skate Jam

24 March, 12pm-4pm  
Thomson Park, free

### Crusaders vs Cheetahs

24 March, 7.35pm  
[www.crusaders.co.nz](http://www.crusaders.co.nz)  
Christchurch Stadium

### Gap Filler Movie

24 March, 8pm  
Traffic (1971, 96mins)  
Introduced by Nick Paris, manager, Alice in Videoland

### Twin Rivers Classic Car Parade

25 March, Gates open 10am  
Canterbury Agricultural Park.  
[www.cmsnz.org.nz/events-1/twin-rivers-classic-car-parade-2012](http://www.cmsnz.org.nz/events-1/twin-rivers-classic-car-parade-2012)

### Plunket Shield Cricket

26-29 March, 10.30am daily  
MainPower Oval, Rangiora

### Gap Filler Movie

29 March, 7.30pm  
Panel presentation/discussion - Dr Ryan Reynolds, Barnaby Bennett, Daniele Abreu e Lima.  
Chaired by Dr Jessica Halliday  
8:30pm, Playtime (1967, 126mins)

### Gap Filler Movie

30 March, 8pm  
Parade (1974, 84mins)

### Mairehau Community Day

31 March, 11am-3pm  
Mairehau High School  
[www.nht.org.nz](http://www.nht.org.nz)

### Selwyn House School Fair

31 March, 3-7pm  
Selwyn House School, 122 Merivale Lane  
[www.facebook.com/events/384754558218327](http://www.facebook.com/events/384754558218327)

### The Big Walk 2012

1 April, 8.30am-3pm  
Hagley Park South  
[www.fyd.org.nz](http://www.fyd.org.nz)

### McDonald's Duathlon

1 April, 9am  
Hagley Park South, Christchurch Netball Centre  
[www.mcdonaldsduathlon.co.nz](http://www.mcdonaldsduathlon.co.nz)

### Ukulele Primary School Initiative.

2 April, 7pm  
Chisnallwood Intermediate  
RSVP by 28 March

### Canterbury United

8 April, 2pm kick off, doors open 1pm  
ASB Football Park  
[www.canterburyunited.co.nz](http://www.canterburyunited.co.nz)

### Central Band RNZAF

75th Anniversary Concert  
9 April, 2pm  
Air Force Museum  
[www.airforcemuseum.co.nz](http://www.airforcemuseum.co.nz)

### CPIT Jazz School Student Series

11, 13, 14 April, 7pm  
CPIT Jazz School Auditorium  
[www.jazzfestivalnz.com](http://www.jazzfestivalnz.com)

### NZ International Jazz & Blues Festival

11-15 April  
[www.jazzfestivalnz.com](http://www.jazzfestivalnz.com)

### Crusaders vs Stormers

14 April, 7.35pm  
Christchurch Stadium  
[www.crusaders.co.nz](http://www.crusaders.co.nz)

### EasiYo Tactix v Southern Steel

15 April, Doors open 6pm  
CBS Canterbury Arena  
[www.tactix.org.nz](http://www.tactix.org.nz)

### ASB Holiday Fun Football

17-19 April, 9am  
Halswell Domain  
[www.hawkfootball.org.nz](http://www.hawkfootball.org.nz)

### Anzac Remembered

25 April, 2pm  
Air Force Museum  
[www.woolstonbrass.org](http://www.woolstonbrass.org)

### Scary Slippery Mud Slides

Up to 30 April  
[www.littlivercampground.co.nz](http://www.littlivercampground.co.nz)